

CD181 (PTF0106) Mouse mAb

CatalogNo: YF0116 **Recombinant** 

Key Features

Host Species

- Mouse

Reactivity

- Human

Applications

- FC

Isotype

- Mouse IgG2b/Kappa

Storage

Storage*

Store at 4°C short term. For long term storage, store at -20°C, avoiding freeze/thaw cycles.

Formulation

PBS, pH 7.4

Recommended Dilution Ratios

FC:1 µg per million cells in 100 µl volume. For optimal results, the reagent should be titrated according to each specific application

Basic Information

Clonality

Monoclonal

Clone Number

PTF0106

Immunogen Information

Specificity

Endogenous

Target Information

Gene name

CXCR1 CMKAR1 IL8RA

Protein Name C-X-C chemokine receptor type 1 (CXC-R1) (CXCR-1) (CDw128a) (High affinity interleukin-8 receptor A) (IL-8R A) (IL-8 receptor type 1) (CD antigen CD181)

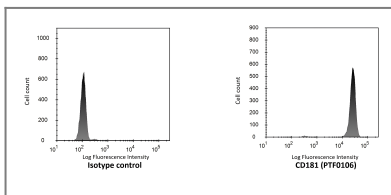
| Organism | Gene ID | UniProt ID |
|----------|--------------------------|--------------------------|
| Human | 3577 ; | P25024 ; |
| Mouse | 227288 ; | Q810W6 ; |

Cellular Localization Cell membrane; Multi-pass membrane protein.

Tissue specificity Blood,Placenta,

Function Function:Receptor to interleukin-8, which is a powerful neutrophils chemotactic factor. Binding of IL-8 to the receptor causes activation of neutrophils. This response is mediated via a G-protein that activate a phosphatidylinositol-calcium second messenger system. This receptor binds to IL-8 with a high affinity and to MGSA (GRO) with a low affinity.,online information:CXC chemokine receptors entry,similarity:Belongs to the G-protein coupled receptor 1 family.,

Validation Data



Human peripheral blood granulocytes stained with Mouse IgG2b, κ isotype control or purified CD181 (PTF0106), followed by anti-mouse IgGs-PE.

Contact information

Orders: order@immunoway.com
Support: tech@immunoway.com
Telephone: 877-594-3616 (Toll Free), 408-747-0185
Website: <http://www.immunoway.com>
Address: 2200 Ringwood Ave San Jose, CA 95131 USA



Please scan the QR code to access additional product information:
CD181 (PTF0106)
Mouse mAb

For Research Use Only. Not for Use in Diagnostic Procedures.

[Antibody](#) | [ELISA Kits](#) | [Protein](#) | [Reagents](#)