

Flotillin-2 protein

CatalogNo: YD0124

| Key Features

Reactivity

- Human

Applications

- WB,SDS-PAGE

| Recommended Dilution Ratios

WB 1:500-2000

| Storage

Storage* -20°C/6 month,-80°C for long storage

Formulation Liquid in PBS

| Basic Information

Source E.coli

Purification E.coli

Purity SDS-PAGE >90%

| Immunogen Information

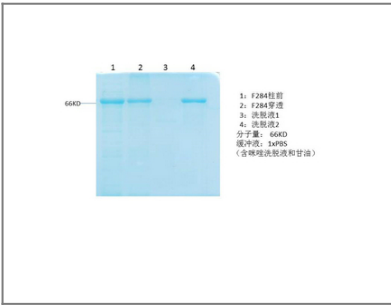
Sequence Amino acid: 176-355, with his-MBP tag.

| Target Information

Gene name FLOT2 ESA1 M17S1

Protein Name	Flotillin-2 protein		
	Organism	Gene ID	UniProt ID
	Human	2319;	Q14254;
Cellular Localization	Cell membrane ; Peripheral membrane protein . Membrane, caveola ; Peripheral membrane protein . Endosome . Membrane ; Lipid-anchor . Membrane-associated protein of caveolae.		
Tissue specificity	In skin, expressed in epidermis and epidermal appendages but not in dermis. Expressed in all layers of the epidermis except the basal layer. In hair follicles, expressed in the suprabasal layer but not the basal layer. Also expressed in melanoma and carcinoma cell lines, fibroblasts and foreskin melanocytes.		
Function	cell adhesion, ectoderm development, epidermis development, biological adhesion,		

Validation Data



Contact information

Orders: order@immunoway.com
 Support: tech@immunoway.com
 Telephone: 877-594-3616 (Toll Free), 408-747-0185
 Website: <http://www.immunoway.com>
 Address: 2200 Ringwood Ave San Jose, CA 95131 USA



Please scan the QR code
 to access additional
 product information:
Flotillin-2 protein

For Research Use Only. Not for Use in Diagnostic Procedures.

[Antibody](#) | [ELISA Kits](#) | [Protein](#) | [Reagents](#)