

Raf-1 protein

CatalogNo: YD0119

| Key Features

Reactivity

- Human

Applications

- WB,SDS-PAGE

| Storage

Storage* -20°C/6 month,-80°C for long storage

Formulation Liquid in PBS

| Recommended Dilution Ratios

WB 1:500-2000

| Basic Information

Source E.coli

Purification E.coli

Purity SDS-PAGE >90%

| Immunogen Information

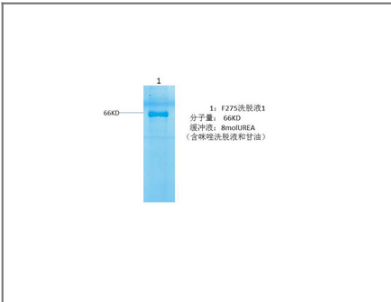
Sequence Amino acid: 492-648, with his-MBP tag.

| Target Information

Gene name RAF1

Protein Name	c-Raf protein		
	Organism	Gene ID	UniProt ID
	Human	5894;	P04049;
Cellular Localization	Cytoplasm. Cell membrane. Mitochondrion. Nucleus. Colocalizes with RGS14 and BRAF in both the cytoplasm and membranes. Phosphorylation at Ser-259 impairs its membrane accumulation. Recruited to the cell membrane by the active Ras protein. Phosphorylation at Ser-338 and Ser-339 by PAK1 is required for its mitochondrial localization. Retinoic acid-induced Ser-621 phosphorylated form of RAF1 is predominantly localized at the nucleus.		
Tissue specificity	In skeletal muscle, isoform 1 is more abundant than isoform 2.		
Function	protein amino acid phosphorylation, phosphorus metabolic process, phosphate metabolic process, apoptosis, cytoskeleton organization, cell surface receptor linked signal transduction, enzyme linked receptor protein signaling pathway, transmembrane receptor protein tyrosine kinase signaling pathway, intracellular signaling cascade, small GTPase mediated signal transduction, Ras protein signal transduction, cell death, cell proliferation, programmed cell death, death, phosphorylation, nerve growth factor receptor signaling pathway,		

Validation Data



Contact information

Orders: order@immunoway.com
 Support: tech@immunoway.com
 Telephone: 877-594-3616 (Toll Free), 408-747-0185
 Website: <http://www.immunoway.com>
 Address: 2200 Ringwood Ave San Jose, CA 95131 USA



Please scan the QR code
 to access additional
 product information:
Raf-1 protein