

## Bcl-W protein

CatalogNo: YD0116

### | Key Features

#### Reactivity

- Human

#### Applications

- WB,SDS-PAGE

### | Recommended Dilution Ratios

WB 1:500-2000

### | Storage

**Storage\*** -20°C/6 month,-80°C for long storage

**Formulation** Liquid in PBS

### | Basic Information

**Source** E.coli

**Purification** E.coli

**Purity** SDS-PAGE >90%

### | Immunogen Information

**Sequence** Amino acid: 1-169, with his-MBP tag.

### | Target Information

**Gene name** BCL2L2

**Protein Name**

Bcl-W protein

**Organism****Gene ID****UniProt ID**

Human

[599;](#)[Q92843;](#)

Mouse

[P70345;](#)**Cellular Localization**

Mitochondrion membrane ; Peripheral membrane protein . Loosely associated with the mitochondrial membrane in healthy cells. During apoptosis, tightly bound to the membrane.

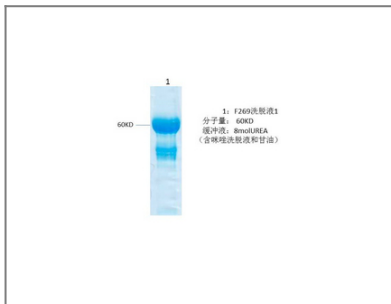
**Tissue specificity**

Expressed (at protein level) in a wide range of tissues with highest levels in brain, spinal cord, testis, pancreas, heart, spleen and mammary glands. Moderate levels found in thymus, ovary and small intestine. Not detected in salivary gland, muscle or liver. Also expressed in cell lines of myeloid, fibroblast and epithelial origin. Not detected in most lymphoid cell lines.

**Function**

reproductive developmental process, apoptosis, anti-apoptosis, gamete generation, spermatogenesis, sex differentiation, cell death, cell proliferation, gonad development, male gonad development, regulation of cell death, programmed cell death, death, sexual reproduction, multicellular organism reproduction, regulation of apoptosis, negative regulation of apoptosis, regulation of programmed cell death, negative regulation of programmed cell death, development of primary sexual characteristics, development of primary male sexual characteristics, male sex differentiation, male gamete generation, reproductive structure development, reproductive process in a multicellular organism, reproductive cellular process, Sertoli cell proliferation, negative regulation of cell death,

## Validation Data



## Contact information

Orders: [order@immunoway.com](mailto:order@immunoway.com)  
Support: [tech@immunoway.com](mailto:tech@immunoway.com)  
Telephone: 877-594-3616 (Toll Free), 408-747-0185  
Website: <http://www.immunoway.com>  
Address: 2200 Ringwood Ave San Jose, CA 95131 USA



Please scan the QR code to access additional product information:  
**Bcl-W protein**

