

STAT4 protein

CatalogNo: YD0105

Key Features

Reactivity

- Human

Applications

- WB, SDS-PAGE

Recommended Dilution Ratios

Storage

Storage* -20°C/6 month, -80°C for long storage

Formulation Liquid in PBS

Basic Information

Purity SDS-PAGE >90%

Immunogen Information

Sequence Amino acid: 506-748, with his-MBP tag.

Target Information

Gene name STAT4

Protein Name STAT4 protein

Organism	Gene ID	UniProt ID
Human	6775 ;	Q14765 ;
Mouse	20849 ;	P42228 ;

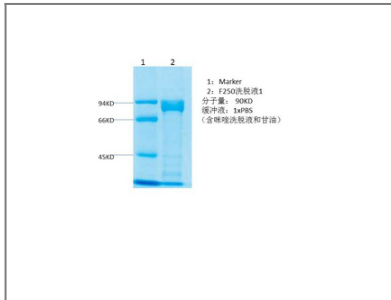
Cellular Localization

Cytoplasm. Nucleus. Translocated into the nucleus in response to phosphorylation.

Function

Disease:Genetic variations in STAT4 are associated with susceptibility to rheumatoid arthritis (RA) [MIM:180300]. Rheumatoid arthritis is a complex, multifactorial disorder. It is one of the most common autoimmune diseases and it is characterized by inflammation of synovial tissue and joint destruction.,Disease:Genetic variations in STAT4 are associated with susceptibility to systemic lupus erythematosus type 11 (SLEB11) [MIM:612253]. Systemic lupus erythematosus (SLE) is a chronic autoimmune disease with a complex genetic basis. SLE is an inflammatory, and often febrile multisystemic disorder of connective tissue characterized principally by involvement of the skin, joints, kidneys, and serosal membranes. It is thought to represent a failure of the regulatory mechanisms of the autoimmune system.,Function:Carries out a dual Function: signal transduction and activation of transcription. Involved in IL12 signaling.,PTM:Tyrosine phosphorylated. Serine phosphorylation is also required for maximal transcriptional activity.,similarity:Belongs to the transcription factor STAT family.,similarity:Contains 1 SH2 domain.,subcellular location:Translocated into the nucleus in response to phosphorylation.,subunit:Forms a homodimer or a heterodimer with a related family member (By similarity). The SH2 domain interacts, in vitro, with IL12RB2 via a short cytoplasmic domain.,

Validation Data



Contact information

Orders: order@immunoway.com
Support: tech@immunoway.com
Telephone: 877-594-3616 (Toll Free), 408-747-0185
Website: <http://www.immunoway.com>
Address: 2200 Ringwood Ave San Jose, CA 95131 USA



Please scan the QR code to access additional product information:
STAT4 protein