

# STAT2 protein

CatalogNo: YD0100

## Key Features

### Reactivity

- Human

### Applications

- WB, SDS-PAGE

## Recommended Dilution Ratios

## Storage

**Storage\*** -20°C/6 month, -80°C for long storage

**Formulation** Liquid in PBS

## Basic Information

**Purity** SDS-PAGE >90%

## Immunogen Information

**Sequence** Amino acid: 568-851, with his-MBP tag.

## Target Information

**Gene name** STAT2

**Protein Name** STAT2 protein

| Organism | Gene ID                | UniProt ID               |
|----------|------------------------|--------------------------|
| Human    | <a href="#">6773</a> ; | <a href="#">P52630</a> ; |
| Mouse    |                        | <a href="#">Q9WVL2</a> ; |

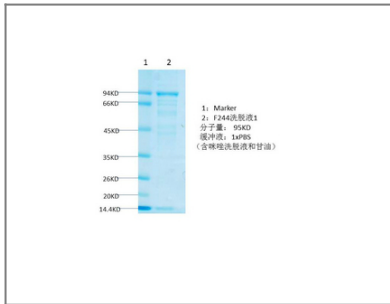
## Cellular Localization

Cytoplasm . Nucleus . Translocated into the nucleus upon activation by IFN-alpha/beta. .

## Function

transcription, regulation of transcription, DNA-dependent, regulation of transcription from RNA polymerase II promoter,intracellular signaling cascade, protein kinase cascade, JAK-STAT cascade, response to virus, regulation of transcription, regulation of RNA metabolic process,

## Validation Data



## Contact information

Orders: [order@immunoway.com](mailto:order@immunoway.com)  
Support: [tech@immunoway.com](mailto:tech@immunoway.com)  
Telephone: 877-594-3616 (Toll Free), 408-747-0185  
Website: <http://www.immunoway.com>  
Address: 2200 Ringwood Ave San Jose, CA 95131 USA



Please scan the QR code to access additional product information:  
**STAT2 protein**

For Research Use Only. Not for Use in Diagnostic Procedures.

[Antibody](#) | [ELISA Kits](#) | [Protein](#) | [Reagents](#)