

LC3B protein

CatalogNo: YD0062

| Key Features

Reactivity

- Human

Applications

- WB,SDS-PAGE

| Recommended Dilution Ratios

WB 1:500-2000

| Storage

Storage* -20°C/6 month,-80°C for long storage

Formulation Liquid in PBS

| Basic Information

Source E.coli

Purification E.coli

Purity SDS-PAGE >90%

| Immunogen Information

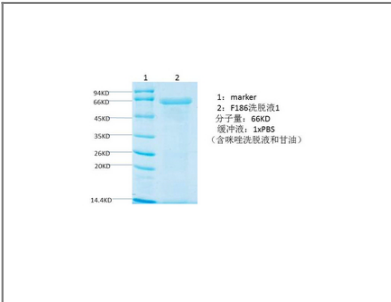
Sequence Amino acid: 1-72, with his-MBP tag.

| Target Information

Gene name MAP1LC3B

Protein Name	LC3B protein		
	Organism	Gene ID	UniProt ID
	Human	81631 ;	Q9GZQ8 ;
	Mouse		Q9CQV6 ;
Cellular Localization	Cytoplasmic vesicle, autophagosome membrane ; Lipid-anchor . Endomembrane system ; Lipid-anchor . Mitochondrion membrane ; Lipid-anchor . Cytoplasm, cytoskeleton . Cytoplasmic vesicle . LC3-II binds to the autophagic membranes. LC3-II localizes with the mitochondrial inner membrane during Parkin-mediated mitophagy (PubMed:28017329). Localizes also to discrete punctae along the ciliary axoneme. .		
Tissue specificity	Most abundant in heart, brain, skeletal muscle and testis. Little expression observed in liver.		
Function	proteolysis, autophagy, macromolecule catabolic process, modification-dependent protein catabolic process, protein catabolic process, modification-dependent macromolecule catabolic process, cellular protein catabolic process, cellular macromolecule catabolic process, proteolysis involved in cellular protein catabolic process,		

Validation Data



Contact information

Orders:

order@immunoway.com

Support:

tech@immunoway.com

Telephone:

877-594-3616 (Toll Free), 408-747-0185

Website:

http://www.immunoway.com

Address:

2200 Ringwood Ave San Jose, CA 95131 USA



Please scan the QR code to access additional product information:

LC3B protein