

## LC3A protein

CatalogNo: YD0061

### | Key Features

#### Reactivity

- Human

#### Applications

- WB,SDS-PAGE

### | Recommended Dilution Ratios

WB 1:500-2000

### | Storage

**Storage\*** -20°C/6 month,-80°C for long storage

**Formulation** Liquid in PBS

### | Basic Information

**Source** E.coli

**Purification** E.coli

**Purity** SDS-PAGE >90%

### | Immunogen Information

**Sequence** Amino acid: 1-77, with his-MBP tag.

### | Target Information

**Gene name** MAP1LC3A

**Protein Name** LC3A protein

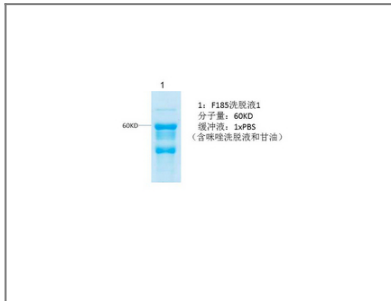
Organism	Gene ID	UniProt ID
Human	<a href="#">84557;</a>	<a href="#">Q9H492;</a>
Mouse		<a href="#">Q91VR7;</a>

**Cellular Localization** Cytoplasmic vesicle, autophagosome membrane ; Lipid-anchor . Endomembrane system ; Lipid-anchor . Cytoplasm, cytoskeleton . LC3-II binds to the autophagic membranes. .

**Tissue specificity** Most abundant in heart, brain, liver, skeletal muscle and testis but absent in thymus and peripheral blood leukocytes.

**Function** autophagic vacuole formation, proteolysis, autophagy, vacuole organization, macromolecule catabolic process, cellular response to starvation, response to extracellular stimulus, macroautophagy, modification-dependent protein catabolic process, protein catabolic process, response to nutrient levels, cellular response to extracellular stimulus, cellular response to nutrient levels, cellular response to stress, response to starvation, modification-dependent macromolecule catabolic process, cellular protein catabolic process, cellular macromolecule catabolic process, proteolysis involved in cellular protein catabolic process,

## Validation Data



## Contact information

Orders: order@immunoway.com  
Support: tech@immunoway.com  
Telephone: 877-594-3616 (Toll Free), 408-747-0185  
Website: <http://www.immunoway.com>  
Address: 2200 Ringwood Ave San Jose, CA 95131 USA



Please scan the QR code to access additional product information:  
**LC3A protein**