

## HSP40 protein

CatalogNo: YD0042

### | Key Features

#### Reactivity

- Human

#### Applications

- WB, SDS-PAGE

### | Recommended Dilution Ratios

WB 1:500-2000

### | Storage

**Storage\*** -20°C/6 month, -80°C for long storage

**Formulation** Liquid in PBS

### | Basic Information

**Source** E.coli

**Purification** E.coli

**Purity** SDS-PAGE >90%

### | Immunogen Information

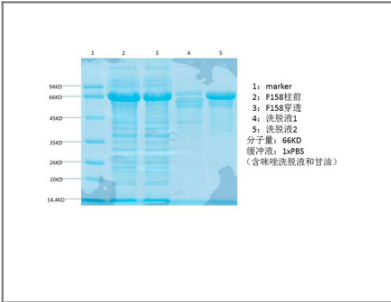
**Sequence** Amino acid: 1-173, with his-MBP tag.

### | Target Information

**Gene name** DNAJB1

|                       |  |                       |                         |
|-----------------------|--|-----------------------|-------------------------|
| Protein Name          | HSP40 protein  |                       |                         |
|                       | Organism   | Gene ID               | UniProt ID              |
|                       | Human  | <a href="#">3337;</a> | <a href="#">P25685;</a> |
|                       | Mouse  |                       | <a href="#">Q9QYJ3;</a> |
| Cellular Localization | Cytoplasm . Nucleus . Nucleus, nucleolus . Translocates rapidly from the cytoplasm to the nucleus, and especially to the nucleoli, upon heat shock.  |                       |                         |
| Function              | protein folding, 'de novo' protein folding, response to unfolded protein, response to organic substance, 'de novo' posttranslational protein folding, chaperone mediated protein folding requiring cofactor, response to protein stimulus, |                       |                         |

## Validation Data



## Contact information

Orders: [order@immunoway.com](mailto:order@immunoway.com)  
 Support: [tech@immunoway.com](mailto:tech@immunoway.com)  
 Telephone: 877-594-3616 (Toll Free), 408-747-0185  
 Website: <http://www.immunoway.com>  
 Address: 2200 Ringwood Ave San Jose, CA 95131 USA



Please scan the QR code  
 to access additional  
 product information:  
**HSP40 protein**