

ERK2 & 1 protein

CatalogNo: YD0028

| Key Features

Reactivity

- Human

Applications

- WB, SDS-PAGE

| Recommended Dilution Ratios

WB 1:500-2000

| Storage

Storage* -20°C/6 month, -80°C for long storage

Formulation Liquid in PBS

| Basic Information

Source E.coli

Purification E.coli

Purity SDS-PAGE >90%

| Immunogen Information

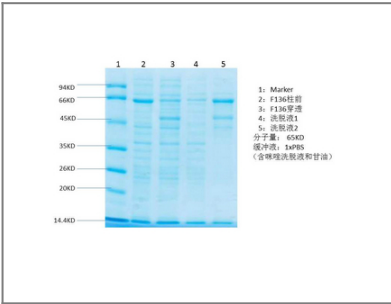
Sequence Amino acid: 246-360, with his-MBP tag.

| Target Information

Gene name MAPK1/MAPK3

Protein Name	ERK2 & 1 protein		
	Organism	Gene ID	UniProt ID
	Human	5594 ; 5595 ;	P27361 ; P28482 ;
Cellular Localization	Cytoplasm . Nucleus. Membrane, caveola . Cell junction, focal adhesion . Autophosphorylation at Thr-207 promotes nuclear localization (PubMed:19060905). PEA15-binding redirects the biological outcome of MAPK3 kinase-signaling by sequestering MAPK3 into the cytoplasm (By similarity). .		
Function	protein amino acid phosphorylation, phosphorus metabolic process, phosphate metabolic process, cell cycle,intracellular signaling cascade, small GTPase mediated signal transduction, Ras protein signal transduction,phosphorylation,		

Validation Data



Contact information

Orders: order@immunoway.com
 Support: tech@immunoway.com
 Telephone: 877-594-3616 (Toll Free), 408-747-0185
 Website: <http://www.immunoway.com>
 Address: 2200 Ringwood Ave San Jose, CA 95131 USA



Please scan the QR code
 to access additional
 product information:
ERK2 & 1 protein

For Research Use Only. Not for Use in Diagnostic Procedures.

[Antibody](#) | [ELISA Kits](#) | [Protein](#) | [Reagents](#)