

ERK2 & 1 protein

CatalogNo: YD0027

| Key Features

Reactivity

- Human

Applications

- WB,SDS-PAGE

| Recommended Dilution Ratios

WB 1:500-2000

| Storage

Storage* -20°C/6 month,-80°C for long storage

Formulation Liquid in PBS

| Basic Information

Source E.coli

Purification E.coli

Purity SDS-PAGE >90%

| Immunogen Information

Sequence Amino acid: 146-210, with his-MBP tag.

| Target Information

Gene name MAPK1/MAPK3

Protein Name

ERK2 & 1 protein

Organism

Human

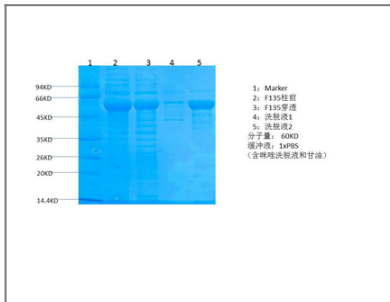
Gene ID[5594](#); [5595](#);**UniProt ID**[P27361](#); [P28482](#);**Cellular Localization**

Cytoplasm . Nucleus. Membrane, caveola . Cell junction, focal adhesion . Autophosphorylation at Thr-207 promotes nuclear localization (PubMed:19060905). PEA15-binding redirects the biological outcome of MAPK3 kinase-signaling by sequestering MAPK3 into the cytoplasm (By similarity). .

Function

protein amino acid phosphorylation, phosphorus metabolic process, phosphate metabolic process, cell cycle, intracellular signaling cascade, small GTPase mediated signal transduction, Ras protein signal transduction, phosphorylation,

Validation Data



Contact information

Orders: order@immunoway.com
Support: tech@immunoway.com
Telephone: 877-594-3616 (Toll Free), 408-747-0185
Website: <http://www.immunoway.com>
Address: 2200 Ringwood Ave San Jose, CA 95131 USA



Please scan the QR code to access additional product information:
ERK2 & 1 protein

For Research Use Only. Not for Use in Diagnostic Procedures.

[Antibody](#) | [ELISA Kits](#) | [Protein](#) | [Reagents](#)