

## ERK2 & 1 protein

CatalogNo: YD0026

### | Key Features

#### Reactivity

- Human

#### Applications

- WB, SDS-PAGE

### | Recommended Dilution Ratios

WB 1:500-2000

### | Storage

**Storage\*** -20°C/6 month, -80°C for long storage

**Formulation** Liquid in PBS

### | Basic Information

**Source** E.coli

**Purification** E.coli

**Purity** SDS-PAGE >90%

### | Immunogen Information

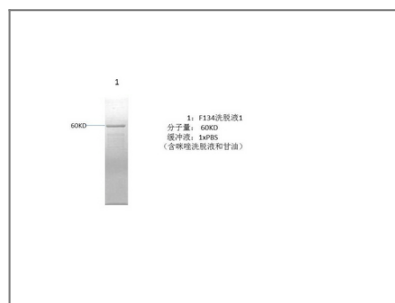
**Sequence** Amino acid: 12-84, with his-MBP tag.

### | Target Information

**Gene name** MAPK1/MAPK3

|                              |   |   |   |
|------------------------------|---|---|---|
| <b>Protein Name</b>          | ERK2 & 1 protein  |   |   |
|                              | <b>Organism</b>   | <b>Gene ID</b>                                | <b>UniProt ID</b>                                 |
|                              | Human   | <a href="#">5594</a> ; <a href="#">5595</a> ; | <a href="#">P27361</a> ; <a href="#">P28482</a> ; |
| <b>Cellular Localization</b> | Cytoplasm . Nucleus. Membrane, caveola . Cell junction, focal adhesion . Autophosphorylation at Thr-207 promotes nuclear localization (PubMed:19060905). PEA15-binding redirects the biological outcome of MAPK3 kinase-signaling by sequestering MAPK3 into the cytoplasm (By similarity). . |   |   |
| <b>Function</b>              | protein amino acid phosphorylation, phosphorus metabolic process, phosphate metabolic process, cell cycle,intracellular signaling cascade, small GTPase mediated signal transduction, Ras protein signal transduction,phosphorylation,  |   |   |

## Validation Data



## Contact information

Orders: [order@immunoway.com](mailto:order@immunoway.com)  
 Support: [tech@immunoway.com](mailto:tech@immunoway.com)  
 Telephone: 877-594-3616 (Toll Free), 408-747-0185  
 Website: <http://www.immunoway.com>  
 Address: 2200 Ringwood Ave San Jose, CA 95131 USA



Please scan the QR code  
 to access additional  
 product information:  
**ERK2 & 1 protein**

For Research Use Only. Not for Use in Diagnostic Procedures.

[Antibody](#) | [ELISA Kits](#) | [Protein](#) | [Reagents](#)