

Desmin protein

CatalogNo: YD0025

| Key Features

Reactivity

- Human

Applications

- WB,SDS-PAGE

| Storage

Storage* -20°C/6 month,-80°C for long storage

Formulation Liquid in PBS

| Recommended Dilution Ratios

WB 1:500-2000

| Basic Information

Source E.coli

Purification E.coli

Purity SDS-PAGE >90%

| Immunogen Information

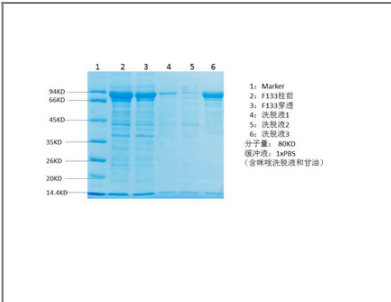
Sequence Amino acid: 242-270, with his-MBP tag.

| Target Information

Gene name DES

Protein Name	Desmin protein		
	Organism	Gene ID	UniProt ID
	Human	1674;	P17661;
	Mouse		P31001;
Cellular Localization	Cytoplasm, myofibril, sarcomere, Z line . Cytoplasm . Cell membrane, sarcolemma . Nucleus . Localizes in the intercalated disks which occur at the Z line of cardiomyocytes (PubMed:24200904, PubMed:26724190). Localizes in the nucleus exclusively in differentiating cardiac progenitor cells and premature cardiomyocytes (By similarity). .		
Function	muscle system process, muscle contraction, cytoskeleton organization, regulation of heart contraction, regulation of system process,		

Validation Data



Contact information

Orders:
Support:
Telephone:
Website:
Address:

order@immunoway.com
tech@immunoway.com
877-594-3616 (Toll Free), 408-747-0185
http://www.immunoway.com
2200 Ringwood Ave San Jose, CA 95131 USA



Please scan the QR code to access additional product information: **Desmin protein**

For Research Use Only. Not for Use in Diagnostic Procedures.

[Antibody](#) | [ELISA Kits](#) | [Protein](#) | [Reagents](#)