

## Beclin-1 protein

CatalogNo: YD0018

### | Key Features

#### Reactivity

- Human

#### Applications

- WB,SDS-PAGE

### | Recommended Dilution Ratios

WB 1:500-2000

### | Storage

**Storage\*** -20°C/6 month,-80°C for long storage

**Formulation** Liquid in PBS

### | Basic Information

**Source** E.coli

**Purification** E.coli

**Purity** SDS-PAGE >90%

### | Immunogen Information

**Sequence** Amino acid: 127-268, with his-MBP tag.

### | Target Information

**Gene name** BECN1

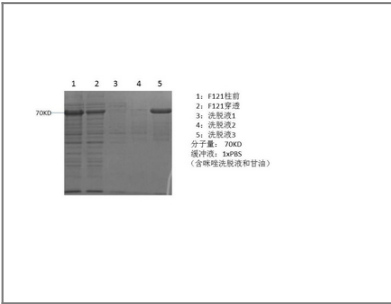
Protein Name	Beclin-1 protein		
	Organism	Gene ID	UniProt ID
	Human	<a href="#">8678;</a>	<a href="#">Q14457;</a>
	Mouse		<a href="#">O88597;</a>

**Cellular Localization** Cytoplasm . Golgi apparatus, trans-Golgi network membrane ; Peripheral membrane protein . Endosome membrane ; Peripheral membrane protein . Endoplasmic reticulum membrane ; Peripheral membrane protein . Mitochondrion membrane ; Peripheral membrane protein . Endosome . Cytoplasmic vesicle, autophagosome . Interaction with ATG14 promotes translocation to autophagosomes. Expressed in dendrites and cell bodies of cerebellar Purkinje cells (By similarity). . ; [Beclin-1-C 35 kDa]: Mitochondrion . Nucleus . Cytoplasm .; [Beclin-1-C 37 kDa]: Mitochondrion .

**Tissue specificity** Ubiquitous.

**Function** autophagic vacuole formation, autophagy, anti-apoptosis, defense response, cellular defense response, vacuole organization, negative regulation of cell proliferation, cellular response to starvation, response to virus, regulation of catabolic process, positive regulation of catabolic process, response to extracellular stimulus, regulation of autophagy,positive regulation of autophagy, positive regulation of cell communication, regulation of cell death, macroautophagy,positive regulation of macroautophagy, regulation of macroautophagy, regulation of cellular catabolic process, positive regulation of cellular catabolic process, response to nutrient levels, cellular response to extracellular stimulus, cellular response to nutrient levels, regulation of response to external stimulus, positive regulation of response to external stimulus, regulation of response to extracellular stimulus, positive regulation of response to extracellular stimulus,regulation of response to nutrient levels, positive regulation of response to nutrient levels, cellular response to stress,regulation of cell proliferation, response to starvation, regulation of apoptosis, negative regulation of apoptosis,regulation of programmed cell death, negative regulation of programmed cell death, positive regulation of response to stimulus, negative regulation of cell death, regulation of cellular response to stress,

## Validation Data



## Contact information

Orders: order@immunoway.com  
Support: tech@immunoway.com  
Telephone: 877-594-3616 (Toll Free), 408-747-0185  
Website: http://www.immunoway.com  
Address: 2200 Ringwood Ave San Jose, CA 95131 USA



Please scan the QR code  
to access additional  
product information:  
**Beclin-1 protein**

---

For Research Use Only. Not for Use in Diagnostic Procedures.

[Antibody](#) | [ELISA Kits](#) | [Protein](#) | [Reagents](#)