

Cleaved Plasma Kallikrein LC (Ile391) Rabbit pAb

CatalogNo: YC0205

Key Features

Host Species

- Rabbit

Reactivity

- Human, Mouse, Rat

Applications

- WB, ELISA, IHC

MW

- 28kD, 70kD (Observed)

Isotype

- IgG

Storage

Storage* -15°C to -25°C/1 year (Do not lower than -25°C)

Formulation Liquid in PBS containing 50% glycerol, 0.5% BSA and 0.02% sodium azide.

Recommended Dilution Ratios

WB 1:500-2000

IHC 1:50-300

ELISA 1:2000-20000

Basic Information

Clonality Polyclonal

Immunogen Information

Immunogen Synthesized peptide derived from human Plasma Kallikrein LC (Cleaved-I391)

Specificity This antibody detects endogenous levels of Human Cleaved-Plasma Kallikrein LC (I391, protein was cleaved amino acid sequence between 390-391)

Target Information

Gene name KLKB1 KLK3

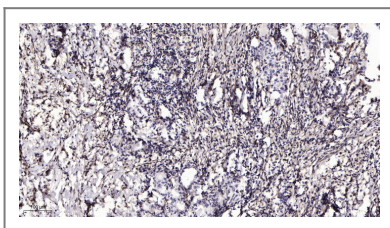
Protein Name Plasma Kallikrein LC (Cleaved-I391)

Organism	Gene ID	UniProt ID
Human	3818 ;	P03952 ;
Mouse	16621 ;	P26262 ;
Rat		P14272 ;

Cellular Localization Secreted.

Function kinin cascade, plasma kallikrein-kinin cascade, acute inflammatory response, Factor XII activation, regulation of acute inflammatory response, proteolysis, defense response, inflammatory response, blood coagulation, hemostasis, response to wounding, positive regulation of macromolecule metabolic process, regulation of protein maturation by peptide bond cleavage, positive regulation of protein maturation by peptide bond cleavage, protein processing, regulation of proteolysis, regulation of blood coagulation, negative regulation of blood coagulation, zymogen activation, plasminogen activation, regulation of response to external stimulus, regulation of cellular protein metabolic process, positive regulation of cellular protein metabolic process, wound healing, fibrinolysis, positive regulation of proteolysis, regulation of inflammatory response, coagulation, regulation of coagulation, negative regulation of coagulation, regulation of body fluid levels, negative regulation of multicellular organismal process, positive regulation of protein metabolic process, protein maturation, protein maturation by peptide bond cleavage, regulation of fibrinolysis, positive regulation of fibrinolysis, regulation of protein processing,

Validation Data



Immunohistochemical analysis of paraffin-embedded human Gastric adenocarcinoma. 1, Antibody was diluted at 1:200 (4°C overnight). 2, Tris-EDTA, pH9.0 was used for antigen retrieval. 3, Secondary antibody was diluted at 1:200 (room temperature, 45min).

Contact information

Orders: order@immunoway.com
Support: tech@immunoway.com
Telephone: 877-594-3616 (Toll Free), 408-747-0185
Website: <http://www.immunoway.com>
Address: 2200 Ringwood Ave San Jose, CA 95131 USA



Please scan the QR code to access additional product information:
Cleaved Plasma Kallikrein LC (Ile391) Rabbit pAb

