

## Cleaved MMP20 (Tyr108) Rabbit pAb

CatalogNo: YC0188

### Key Features

#### Host Species

- Rabbit

#### Reactivity

- Human, Mouse, Rat

#### Applications

- WB, IHC

#### MW

- 42kD, 53kD (Observed)

#### Isotype

- IgG

### Storage

**Storage\*** -15°C to -25°C/1 year (Do not lower than -25°C)

**Formulation** Liquid in PBS containing 50% glycerol, 0.5% BSA and 0.02% sodium azide.

### Recommended Dilution Ratios

**WB 1:500-2000**

**IHC 1:50-300**

### Basic Information

**Clonality** Polyclonal

### Immunogen Information

**Immunogen** Synthesized peptide derived from human MMP20 (Cleaved-Tyr108)

**Specificity** This antibody detects endogenous levels of Human, Mouse, Rat MMP20 (Cleaved-Tyr108, protein was cleaved amino acid sequence between 107-108 )

### Target Information

**Gene name** MMP20

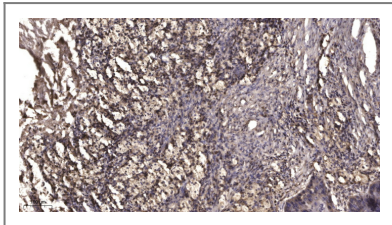
**Protein Name** MMP20 (Cleaved-Tyr108)

Organism	Gene ID	UniProt ID
Human	<a href="#">9313</a> ;	<a href="#">O60882</a> ;
Mouse	<a href="#">30800</a> ;	<a href="#">P57748</a> ;

**Cellular Localization** Secreted, extracellular space, extracellular matrix .

**Tissue specificity** Expressed specifically in the enamel organ.

## Validation Data



Immunohistochemical analysis of paraffin-embedded human Squamous cell carcinoma of lung. 1, Antibody was diluted at 1:200(4° overnight). 2, Tris-EDTA,pH9.0 was used for antigen retrieval. 3,Secondary antibody was diluted at 1:200(room temperature, 45min).

## Contact information

Orders: [order@immunoway.com](mailto:order@immunoway.com)  
Support: [tech@immunoway.com](mailto:tech@immunoway.com)  
Telephone: 877-594-3616 (Toll Free), 408-747-0185  
Website: <http://www.immunoway.com>  
Address: 2200 Ringwood Ave San Jose, CA 95131 USA



Please scan the QR code to access additional product information:  
**Cleaved MMP20 (Tyr108) Rabbit pAb**

For Research Use Only. Not for Use in Diagnostic Procedures.

[Antibody](#) | [ELISA Kits](#) | [Protein](#) | [Reagents](#)