

Cleaved Cathepsin A (20k, Met327) Rabbit pAb

CatalogNo: YC0184

Key Features

Host Species

- Rabbit

Reactivity

- Human, Mouse

Applications

- WB, IHC

MW

- 20kD, 52kD (Observed)

Isotype

- IgG

Recommended Dilution Ratios

WB 1:500-2000

IHC 1:50-300

Storage

Storage* -15°C to -25°C/1 year (Do not lower than -25°C)

Formulation Liquid in PBS containing 50% glycerol, 0.5% BSA and 0.02% sodium azide.

Basic Information

Clonality Polyclonal

Immunogen Information

Immunogen Synthesized peptide derived from human PPGB (20k, Cleaved-Met327)

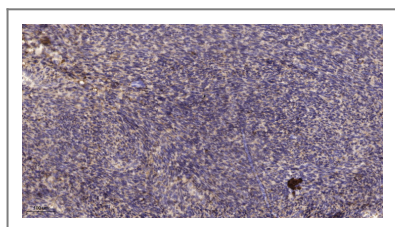
Specificity This antibody detects endogenous levels of Human, Mouse PPGB (20k, Cleaved-Met327, protein was cleaved amino acid sequence between 326-327)

Target Information

Gene name CTSA PPGB

Protein Name	Lysosomal protective protein (20k, Cleaved-Met327)		
	Organism	Gene ID	UniProt ID
	Human	5476;	P10619;
	Mouse	19025;	P16675;
Cellular Localization	Lysosome.		
Function	proteolysis, intracellular protein transport, protein localization, protein transport, cellular protein localization,establishment of protein localization, intracellular transport, cellular macromolecule localization,		

Validation Data



Immunohistochemical analysis of paraffin-embedded human uterus. 1, Antibody was diluted at 1:200(4° overnight). 2, Tris-EDTA,pH9.0 was used for antigen retrieval. 3,Secondary antibody was diluted at 1:200(room temperature, 45min).

Contact information

Orders: order@immunoway.com
 Support: tech@immunoway.com
 Telephone: 877-594-3616 (Toll Free), 408-747-0185
 Website: <http://www.immunoway.com>
 Address: 2200 Ringwood Ave San Jose, CA 95131 USA



Please scan the QR code
 to access additional
 product information:
Cleaved Cathepsin A
(20k, Met327)
Rabbit pAb

For Research Use Only. Not for Use in Diagnostic Procedures.

[Antibody](#) | [ELISA Kits](#) | [Protein](#) | [Reagents](#)