

Cleaved Caspase 10 p23/17 (Val220) Rabbit pAb

CatalogNo: YC0107

Orthogonal Validated 

Key Features

Host Species

- Rabbit

Reactivity

- Human, Mouse, Rat

Applications

- WB, ELISA

MW

- 58kD, 23kD (Observed)

Isotype

- IgG

Recommended Dilution Ratios

WB 1:500-2000**ELISA(peptide) 1:5000-20000**

Storage

Storage*

-15°C to -25°C/1 year (Do not lower than -25°C)

Formulation

Liquid in PBS containing 50% glycerol, 0.5% BSA and 0.02% sodium azide.

Basic Information

Clonality

Polyclonal

Immunogen Information

Immunogen

Synthesized peptide derived from human Caspase 10 (p23/17, Cleaved-Val220)

Specificity

This antibody detects endogenous levels of human Caspase 10 (p23/17, Cleaved-Val220)

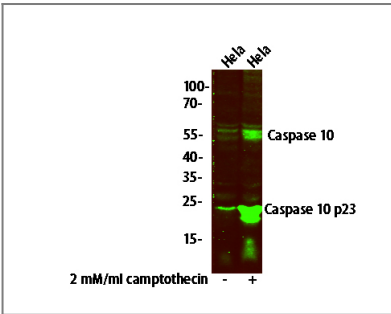
Target Information

Gene name

CASP10 MCH4

Protein Name	Caspase10		
	Organism	Gene ID	UniProt ID
	Human	843;	Q92851;
Cellular Localization	cytosol,CD95 death-inducing signaling complex,ripiptosome,		
Tissue specificity	Detectable in most tissues. Lowest expression is seen in brain, kidney, prostate, testis and colon.		
Function	<p>Catalytic activity:Strict requirement for Asp at position P1 and has a preferred cleavage sequence of Leu-Gln-Thr-Asp- -Gly.,Disease:Defects in CASP10 are a cause of familial non-Hodgkin lymphoma (NHL) [MIM:605027]. NHL is a cancer that starts in cells of the lymph system, which is part of the body's immune system. NHLs can occur at any age and are often marked by enlarged lymph nodes, fever and weight loss.,Disease:Defects in CASP10 are a cause of gastric cancers [MIM:137215].,Disease:Defects in CASP10 are the cause of autoimmune lymphoproliferative syndrome type 2A (ALPS2A) [MIM:603909]. ALPS2 is characterized by abnormal lymphocyte and dendritic cell homeostasis and immune regulatory defects.,Function:Involved in the activation cascade of caspases responsible for apoptosis execution. Recruited to both Fas- and TNFR-1 receptors in a FADD dependent manner. May participate in the granzyme B apoptotic pathways. Cleaves and activates caspase-3, -4, -6, -7, -8, and -9. Hydrolyzes the small- molecule substrates, Tyr-Val-Ala-Asp- -AMC and Asp-Glu-Val-Asp- -AMC.,Function:Isoform C is proteolytically inactive.,online information:CASP10 mutation db,online information:Caspase-10 mutations causing ALPS type II,PTM:Cleavage by granzyme B and autocatalytic activity generate the two active subunits.,PTM:Phosphorylated upon DNA damage, probably by ATM or ATR.,similarity:Belongs to the peptidase C14A family.,similarity:Contains 2 DED (death effector) domains.,subunit:Heterotetramer that consists of two anti-parallel arranged heterodimers, each one formed by a 23/17 kDa (p23/17) (depending on the splicing events) and a 12 kDa (p12) subunit (By similarity). Self-associates. Interacts with FADD and CASP8. Found in a Fas signaling complex consisting of FAS, FADD, CASP8 and CASP10.,tissue specificity:Detectable in most tissues. Lowest expression is seen in brain, kidney, prostate, testis and colon.,</p>		

| Validation Data



Western blot analysis of HeLa cell treated or untreated with 2 mM/ml camptothecin , primary antibody was diluted at 1:1000, 4° over night, secondary antibody(cat: RS23920)was diluted at 1:10000, 37° 1hour.

| Contact information

Orders: order@immunoway.com
Support: tech@immunoway.com
Telephone: 877-594-3616 (Toll Free), 408-747-0185
Website: http://www.immunoway.com
Address: 2200 Ringwood Ave San Jose, CA 95131 USA



Please scan the QR code
to access additional
product information:
Cleaved Caspase 10
p23/17 (Val220)
Rabbit pAb

For Research Use Only. Not for Use in Diagnostic Procedures.

[Antibody](#) | [ELISA Kits](#) | [Protein](#) | [Reagents](#)