

Cleaved Plasminogen HC A short form (Val98) Rabbit pAb

CatalogNo: YC0103

Key Features

Host Species

- Rabbit

Reactivity

- Human, Mouse, Rat

Applications

- WB, ELISA

MW

- 54kD (Observed)

Isotype

- IgG

Recommended Dilution Ratios

WB 1:500-1:2000

ELISA 1:10000

Not yet tested in other applications.

Storage

Storage* -15°C to -25°C/1 year (Do not lower than -25°C)

Formulation Liquid in PBS containing 50% glycerol, 0.5% BSA and 0.02% sodium azide.

Basic Information

Clonality Polyclonal

Immunogen Information

Immunogen The antiserum was produced against synthesized peptide derived from human PLMN. AA range: 79-128

Specificity Cleaved-Plasminogen HC A short form (V98) Polyclonal Antibody detects endogenous levels of fragment of activated Plasminogen HC A short form protein resulting from cleavage adjacent to V98.

| Target Information

Gene name PLG

Protein Name Plasminogen

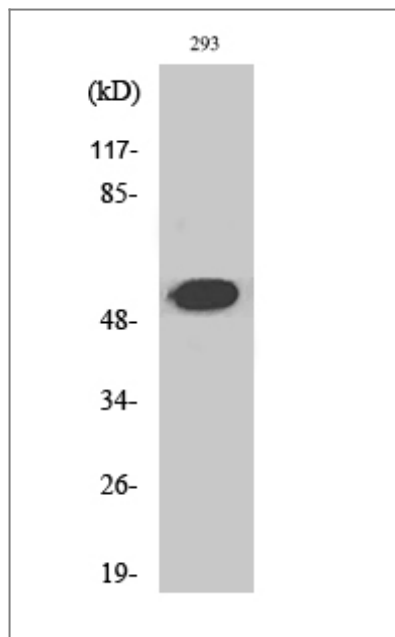
Organism	Gene ID	UniProt ID
Human	5340 ;	P00747 ;
Mouse	18815 ;	P20918 ;
Rat	85253 ;	Q01177 ;

Cellular Localization Secreted . Locates to the cell surface where it is proteolytically cleaved to produce the active plasmin. Interaction with HRG tethers it to the cell surface.

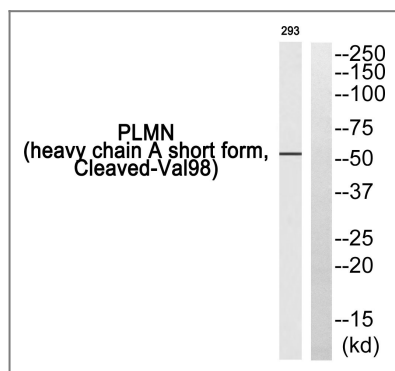
Tissue specificity Present in plasma and many other extracellular fluids. It is synthesized in the liver.

Function Catalytic activity:Preferential cleavage: Lys-|-Xaa > Arg-|-Xaa; higher selectivity than trypsin. Converts fibrin into soluble products.,Disease:Defects in PLG are a cause of thrombophilia [MIM:188050]; a form of recurrent thrombosis.,Disease:Defects in PLG may be associated with ligneous conjunctivitis [MIM:217090]. Ligneous conjunctivitis is an unusual and rare form of chronic conjunctivitis, characterized by chronic tearing and redness of the conjunctivae. Initially, pseudomembranes form on the palpebral surfaces which then progress to thick nodular masses that replace the normal mucosa. Because the pseudomembranes have a woodlike consistency, the disease is termed "ligneous" conjunctivitis. The disease may be associated with pseudomembranous lesions of other mucous membranes in the mouth, nasopharynx, trachea, and female genital tract.,Domain:Kringle domains mediate interaction with CSPG4.,enzyme regulation:Converted into plasmin by plasminogen activators, both plasminogen and its activator being bound to fibrin. Activated with catalytic amounts of streptokinase.,Function:Angiostatin is an angiogenesis inhibitor that blocks neovascularization and growth of experimental primary and metastatic tumors in vivo.,Function:Plasmin dissolves the fibrin of blood clots and acts as a proteolytic factor in a variety of other processes including embryonic development, tissue remodeling, tumor invasion, and inflammation; in ovulation it weakens the walls of the Graafian follicle. It activates the urokinase-type plasminogen activator, collagenases and several complement zymogens, such as C1 and C5. It cleaves fibrin, fibronectin, thrombospondin, laminin and von Willebrand factor. Its role in tissue remodeling and tumor invasion may be modulated by CSPG4.,miscellaneous:Plasmin is inactivated by alpha-2-antiplasmin immediately after dissociation from the clot.,online information:Plasmin entry,PTM:In the presence of the inhibitor, the activation involves only cleavage after Arg-580, yielding two chains held together by two disulfide bonds. In the absence of the inhibitor, the activation involves additionally the removal of the activation peptide.,PTM:N-linked glycan contains N-acetylglucosamine and sialic acid. O-linked glycans consist of Gal-GalNAc disaccharide modified with up to 2 sialic acid residues (microheterogeneity),similarity:Belongs to the peptidase S1 family.,similarity:Belongs to the peptidase S1 family. Plasminogen subfamily.,similarity:Contains 1 PAN domain.,similarity:Contains 1 peptidase S1 domain.,similarity:Contains 5 kringle domains.,subunit:Interacts with AMOT and CSPG4 (also true for angiostatin),tissue specificity:Present in plasma and many other extracellular fluids. It is synthesized in the liver.,

Validation Data



Western Blot analysis of various cells using Cleaved-Plasminogen HC A short form (V98) Polyclonal Antibody



Western blot analysis of PLMN (heavy chain A short form, Cleaved-Val98) Antibody. The lane on the right is blocked with the PLMN (heavy chain A short form, Cleaved-Val98) peptide.

Contact information

Orders: order@immunoway.com
Support: tech@immunoway.com
Telephone: 877-594-3616 (Toll Free), 408-747-0185
Website: <http://www.immunoway.com>
Address: 2200 Ringwood Ave San Jose, CA 95131 USA



Please scan the QR code to access additional product information:

**Cleaved
Plasminogen HC A
short form (Val98)
Rabbit pAb**

For Research Use Only. Not for Use in Diagnostic Procedures.

[Antibody](#) | [ELISA Kits](#) | [Protein](#) | [Reagents](#)