

Cleaved MASP-1 HC (Arg448) Rabbit pAb

CatalogNo: YC0097

Orthogonal Validated 

Key Features

Host Species

- Rabbit

Reactivity

- Human, Mouse, Rat

Applications

- WB, ELISA

MW

- 47kD (Observed)

Isotype

- IgG

Recommended Dilution Ratios

WB 1:500-1:2000**ELISA 1:10000****Not yet tested in other applications.**

Storage

Storage* -15°C to -25°C/1 year (Do not lower than -25°C)**Formulation** Liquid in PBS containing 50% glycerol, 0.5% BSA and 0.02% sodium azide.

Basic Information

Clonality Polyclonal

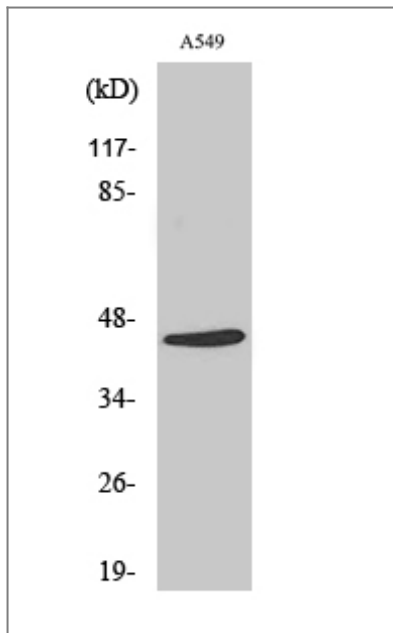
Immunogen Information

Immunogen The antiserum was produced against synthesized peptide derived from human MASP1. AA range: 399-448**Specificity** Cleaved-MASP-1 HC (R448) Polyclonal Antibody detects endogenous levels of fragment of activated MASP-1 HC protein resulting from cleavage adjacent to R448.

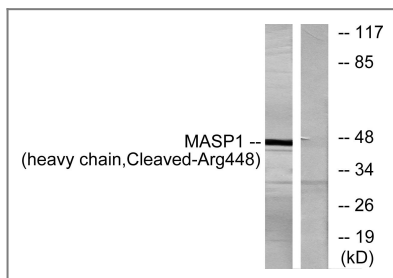
Target Information

Gene name	MASP1 CRARF CRARF1 PRSS5		
Protein Name	Mannan-binding lectin serine protease 1		
	Organism	Gene ID	UniProt ID
	Human	5648 ;	P48740 ;
	Mouse	17174 ;	P98064 ;
	Rat	64023 ;	Q8CHN8 ;
Cellular Localization	Secreted .		
Tissue specificity	Protein of the plasma which is primarily expressed by liver.		
Function	enzyme regulation:Inhibited by SERPING1 and A2M.,Function:Functions in the lectin pathway of complement, which performs a key role in innate immunity by recognizing pathogens through patterns of sugar moieties and neutralizing them. The lectin pathway is triggered upon binding of mannan-binding lectin (MBL) and ficolins to sugar moieties which leads to activation of the associated proteases MASP1 and MASP2. Functions as an endopeptidase and may activate MASP2 or C2 or directly activate C3 the key component of complement reaction. Isoform 2 may have an inhibitory effect on the activation of the lectin pathway of complement or may cleave IGFBP5.,PTM:Autoproteolytic processing of the proenzyme produces the active enzyme composed on the heavy and the light chain held together by a disulfide bond. Isoform 1 but not isoform 2 is activated through autoproteolytic processing.,PTM:N-glycosylated. Some N-linked glycan are of the complex-type.,PTM:The iron and 2-oxoglutarate dependent 3-hydroxylation of aspartate and asparagine is (R) stereospecific within EGF domains.,similarity:Belongs to the peptidase S1 family.,similarity:Contains 1 EGF-like domain.,similarity:Contains 1 peptidase S1 domain.,similarity:Contains 2 CUB domains.,similarity:Contains 2 Sushi (CCP/SCR) domains.,subunit:Homodimer. Interacts with the oligomeric lectins MBL2, FCN2 and FCN3; triggers the lectin pathway of complement through activation of C3. Interacts with SERPING1.,tissue specificity:Protein of the plasma which is primarily expressed by liver.,		

| Validation Data



Western Blot analysis of various cells using Cleaved-MASP-1 HC (R448) Polyclonal Antibody



Western blot analysis of lysates from A549 cells, treated with etoposide 25uM 24h, using MASP1 (heavy chain, Cleaved-Arg448) Antibody. The lane on the right is blocked with the synthesized peptide.

Contact information

Orders: order@immunoway.com
 Support: tech@immunoway.com
 Telephone: 877-594-3616 (Toll Free), 408-747-0185
 Website: <http://www.immunoway.com>
 Address: 2200 Ringwood Ave San Jose, CA 95131 USA



Please scan the QR code to access additional product information:
Cleaved MASP-1 HC (Arg448) Rabbit pAb

For Research Use Only. Not for Use in Diagnostic Procedures.

[Antibody](#) | [ELISA Kits](#) | [Protein](#) | [Reagents](#)