

Cleaved ITIH4 70k (Arg661) Rabbit pAb

CatalogNo: YC0095

Key Features

Host Species

- Rabbit

Reactivity

- Human, Mouse, Rat

Applications

- IHC, IF, ELISA

MW

- 103kD (Calculated)

Isotype

- IgG

Storage

Storage* -15°C to -25°C/1 year (Do not lower than -25°C)

Formulation Liquid in PBS containing 50% glycerol, 0.5% BSA and 0.02% sodium azide.

Recommended Dilution Ratios

IHC 1:100-1:300

ELISA 1:10000

IF 1:50-200

Basic Information

Clonality Polyclonal

Immunogen Information

Immunogen The antiserum was produced against synthesized peptide derived from human ITIH4. AA range: 612-661

Specificity Cleaved-ITI-H4 70k (R661) Polyclonal Antibody detects endogenous levels of fragment of activated ITI-H4 70k protein resulting from cleavage adjacent to R661.

Target Information

Gene name ITIH4 IHRP ITIHL1 PK120 PRO1851

Protein Name Inter-alpha-trypsin inhibitor heavy chain H4

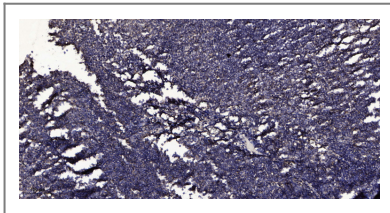
Organism	Gene ID	UniProt ID
Human	3700;	Q14624;

Cellular Localization Secreted.

Tissue specificity Liver specific.

Function Function:May be involved in acute phase reactions.,induction:Levels increase significantly in the sera of patients after different surgical trauma.,PTM:Appears to be both N- and O-glycosylated.,PTM:Cleaved by plasma kallikrein to yield 100 kDa and 35 kDa fragments, and the resulting 100 kDa fragment is further converted to a 70 kDa fragment.,PTM:The O-linked polysaccharides on Ser-696, Thr-701 and Ser-702 are probably the mucin type linked to GalNAc.,similarity:Belongs to the ITIH family.,similarity:Contains 1 VWFA domain.,tissue specificity:Liver specific.,

Validation Data



Immunohistochemical analysis of paraffin-embedded human tonsil. 1, Antibody was diluted at 1:200(4° overnight). 2, Tris-EDTA,pH9.0 was used for antigen retrieval. 3,Secondary antibody was diluted at 1:200(room temperature, 30min).

Contact information

Orders: order@immunoway.com
Support: tech@immunoway.com
Telephone: 877-594-3616 (Toll Free), 408-747-0185
Website: <http://www.immunoway.com>
Address: 2200 Ringwood Ave San Jose, CA 95131 USA



Please scan the QR code to access additional product information:
Cleaved ITIH4 70k (Arg661) Rabbit pAb

For Research Use Only. Not for Use in Diagnostic Procedures.

[Antibody](#) | [ELISA Kits](#) | [Protein](#) | [Reagents](#)