

## Cleaved ITI-H1 (Asp672) Rabbit pAb

CatalogNo: YC0093

Orthogonal Validated 

### Key Features

#### Host Species

- Rabbit

#### Reactivity

- Human, Mouse

#### Applications

- WB, ELISA

#### MW

- 71kD (Observed)

#### Isotype

- IgG

### Storage

**Storage\*** -15°C to -25°C/1 year (Do not lower than -25°C)

**Formulation** Liquid in PBS containing 50% glycerol, 0.5% BSA and 0.02% sodium azide.

### Recommended Dilution Ratios

**WB 1:500-1:2000**

**ELISA 1:20000**

**Not yet tested in other applications.**

### Basic Information

**Clonality** Polyclonal

### Immunogen Information

**Immunogen** The antiserum was produced against synthesized peptide derived from human ITIH1. AA range: 623-672

**Specificity** Cleaved-ITI-H1 (D672) Polyclonal Antibody detects endogenous levels of fragment of activated ITI-H1 protein resulting from cleavage adjacent to D672.

### Target Information

**Gene name** ITIH1

**Protein Name** Inter-alpha-trypsin inhibitor heavy chain H1

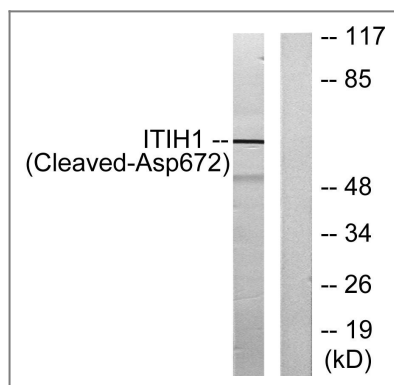
Organism	Gene ID	UniProt ID
Human	<a href="#">3697</a> ;	<a href="#">P19827</a> ;
Mouse	<a href="#">16424</a> ;	<a href="#">Q61702</a> ;

**Cellular Localization** Secreted.

**Tissue specificity** Blood,Epithelium,Liver,Plasma,Serum,Thymus,

**Function** Function:Contains a potential peptide which could stimulate a broad spectrum of phagocytotic cells.,Function:May act as a carrier of hyaluronan in serum or as a binding protein between hyaluronan and other matrix protein, including those on cell surfaces in tissues to regulate the localization, synthesis and degradation of hyaluronan which are essential to cells undergoing biological processes.,mass spectrometry: PubMed:9677337,polymorphism:There are 3 common alleles; ITIH1\*1 with Glu-585/Gln-595, ITIH1\*2 with Val-585/Arg-595 and ITIH1\*3 with Glu-585/Arg-595.,PTM:Heavy chains are linked to bikunin via chondroitin 4-sulfate esterified to the alpha-carboxyl of the C-terminal aspartate after propeptide cleavage.,PTM:The S-linked glycan is composed of two units of either Glc or Gal.,similarity:Belongs to the ITIH family.,similarity:Contains 1 VWFA domain.,subunit:I-alpha-I plasma protease inhibitors are assembled from one or two heavy chains (H1, H2 or H3) and one light chain, bikunin. Inter-alpha-inhibitor (I-alpha-I) is composed of H1, H2 and bikunin, inter-alpha-like inhibitor (I-alpha-LI) of H2 and bikunin, and pre-alpha-inhibitor (P-alpha-I) of H3 and bikunin.,

## Validation Data



Western blot analysis of lysates from Jurkat cells, treated with etoposide 25uM 24h, using ITIH1 (Cleaved-Asp672) Antibody. The lane on the right is blocked with the synthesized peptide.

## Contact information

Orders: order@immunoway.com  
Support: tech@immunoway.com  
Telephone: 877-594-3616 (Toll Free), 408-747-0185  
Website: http://www.immunoway.com  
Address: 2200 Ringwood Ave San Jose, CA 95131 USA



Please scan the QR code  
to access additional  
product information:  
**Cleaved ITI-H1  
(Asp672) Rabbit  
pAb**

---

For Research Use Only. Not for Use in Diagnostic Procedures.

[Antibody](#) | [ELISA Kits](#) | [Protein](#) | [Reagents](#)