

## Cleaved Factor XII HC (Ile20) Rabbit pAb

CatalogNo: YC0084

### Key Features

#### Host Species

- Rabbit

#### Reactivity

- Human,Rat,Mouse,

#### Applications

- WB,IHC,IF,ELISA

#### MW

- 68kD (Calculated)

#### Isotype

- IgG

### Recommended Dilution Ratios

**WB 1:500-1:2000**

**IHC 1:100-1:300**

**ELISA 1:20000**

**IF 1:50-200**

### Storage

#### Storage\*

-15°C to -25°C/1 year(Do not lower than -25°C)

#### Formulation

Liquid in PBS containing 50% glycerol, 0.5% BSA and 0.02% sodium azide.

### Basic Information

#### Clonality

Polyclonal

### Immunogen Information

#### Immunogen

The antiserum was produced against synthesized peptide derived from human FA12. AA range:1-50

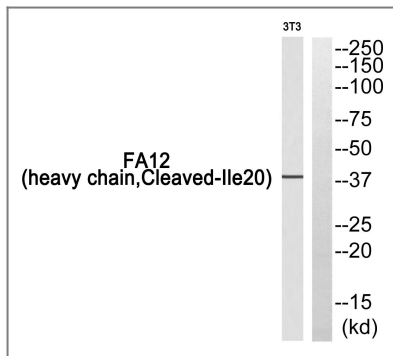
#### Specificity

Cleaved-Factor XII HC (I20) Polyclonal Antibody detects endogenous levels of fragment of activated Factor XII HC protein resulting from cleavage adjacent to I20.

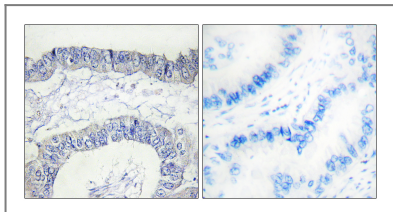
## | Target Information

Gene name	F12		
Protein Name	Coagulation factor XII		
	Organism	Gene ID	UniProt ID
	Human	<a href="#">2161</a> ;	<a href="#">P00748</a> ;
	Mouse		<a href="#">Q80YC5</a> ;
Cellular Localization	Secreted.		
Tissue specificity	Blood,Lung,Plasma,		
Function	<p>Catalytic activity:Selective cleavage of Arg- -Ile bonds in factor VII to form factor VIIa and factor XI to form factor XIa.,Disease:Defects in F12 are the cause of factor XII deficiency (FA12D) [MIM:234000]; also known as Hageman factor deficiency. This trait is an asymptomatic anomaly of in vitro blood coagulation. Its diagnosis is based on finding a low plasma activity of the factor in coagulating assays. It is usually only accidentally discovered through pre-operative blood tests. F12 deficiency is divided into two categories, a cross-reacting material (CRM)-negative group (negative F12 antigen detection) and a CRM-positive group (positive F12 antigen detection).,Disease:Defects in F12 are the cause of hereditary angioedema type 3 (HAE3) [MIM:610618]; also known as estrogen-related HAE or hereditary angioneurotic edema with normal C1 inhibitor concentration and function. HAE is characterized by episodic local subcutaneous edema, and submucosal edema involving the upper respiratory and gastrointestinal tracts. HAE3 occurs exclusively in women and is precipitated or worsened by high estrogen levels (e.g., during pregnancy or treatment with oral contraceptives). It differs from HAE types 1 and 2 in that both concentration and function of C1 inhibitor are normal.,Function:Factor XII is a serum glycoprotein that participates in the initiation of blood coagulation, fibrinolysis, and the generation of bradykinin and angiotensin. Prekallikrein is cleaved by factor XII to form kallikrein, which then cleaves factor XII first to alpha-factor XIIa and then to beta-factor XIIa. Alpha-factor XIIa activates factor XI to factor XIa.,online information:F12 mutation db,online information:Factor XII entry,PTM:O- and N-glycosylated. The O-linked polysaccharides were not identified, but are probably the mucin type linked to GalNAc.,similarity:Belongs to the peptidase S1 family.,similarity:Contains 1 fibronectin type-I domain.,similarity:Contains 1 fibronectin type-II domain.,similarity:Contains 1 kringle domain.,similarity:Contains 1 peptidase S1 domain.,similarity:Contains 2 EGF-like domains.,</p>		

## | Validation Data



Western blot analysis of FA12 (heavy chain, Cleaved-Ile20) Antibody. The lane on the right is blocked with the FA12 (heavy chain, Cleaved-Ile20) peptide.



Immunohistochemistry analysis of paraffin-embedded human lung carcinoma, using FA12 (heavy chain, Cleaved-Ile20) Antibody. The lane on the right is blocked with the FA12 (heavy chain, Cleaved-Ile20) peptide.

## Contact information

Orders: [order@immunoway.com](mailto:order@immunoway.com)  
 Support: [tech@immunoway.com](mailto:tech@immunoway.com)  
 Telephone: 877-594-3616 (Toll Free), 408-747-0185  
 Website: <http://www.immunoway.com>  
 Address: 2200 Ringwood Ave San Jose, CA 95131 USA



Please scan the QR code to access additional product information:  
**Cleaved Factor XII HC (Ile20) Rabbit pAb**

For Research Use Only. Not for Use in Diagnostic Procedures.

[Antibody](#) | [ELISA Kits](#) | [Protein](#) | [Reagents](#)