

Cleaved Factor Xa activated HC (Ile235) Rabbit pAb

CatalogNo: YC0083

Key Features

Host Species

- Rabbit

Reactivity

- Human, Mouse, Rat

Applications

- WB, ELISA

MW

- 30kD (Observed)

Isotype

- IgG

Recommended Dilution Ratios

WB 1:500-1:2000

ELISA 1:20000

Not yet tested in other applications.

Storage

Storage* -15°C to -25°C/1 year (Do not lower than -25°C)

Formulation Liquid in PBS containing 50% glycerol, 0.5% BSA and 0.02% sodium azide.

Basic Information

Clonality Polyclonal

Immunogen Information

Immunogen The antiserum was produced against synthesized peptide derived from human FA10. AA range: 216-265

Specificity Cleaved-Factor Xa activated HC (I235) Polyclonal Antibody detects endogenous levels of fragment of activated Factor Xa activated HC protein resulting from cleavage adjacent to I235.

Target Information

Gene name F10
Protein Name Coagulation factor X

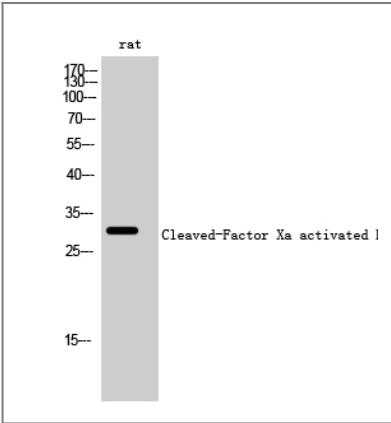
Organism	Gene ID	UniProt ID
Human	2159 ;	P00742 ;
Mouse	14058 ;	Q88947 ;
Rat	29243 ;	Q63207 ;

Cellular Localization Secreted.

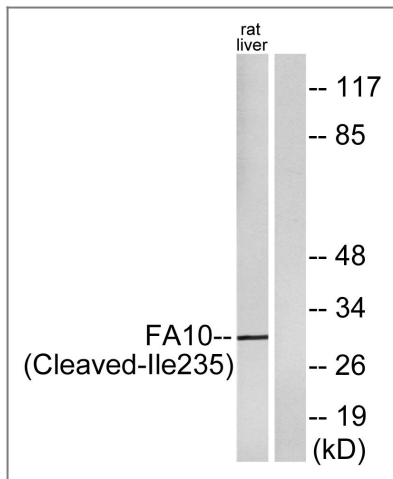
Tissue specificity Plasma; synthesized in the liver.

Function Catalytic activity: Selective cleavage of Arg-|-Thr and then Arg-|-Ile bonds in prothrombin to form thrombin., Function: Factor Xa is a vitamin K-dependent glycoprotein that converts prothrombin to thrombin in the presence of factor Va, calcium and phospholipid during blood clotting., online information: Factor X entry, PTM: N- and O-glycosylated., PTM: The activation peptide is cleaved by factor IXa (in the intrinsic pathway), or by factor VIIa (in the extrinsic pathway)., PTM: The iron and 2-oxoglutarate dependent 3-hydroxylation of aspartate and asparagine is (R) stereospecific within EGF domains., PTM: The vitamin K-dependent, enzymatic carboxylation of some glutamate residues allows the modified protein to bind calcium., similarity: Belongs to the peptidase S1 family., similarity: Contains 1 Gla (gamma-carboxy-glutamate) domain., similarity: Contains 1 peptidase S1 domain., similarity: Contains 2 EGF-like domains., subunit: The two chains are formed from a single-chain precursor by the excision of two Arg residues and are held together by 1 or more disulfide bonds., tissue specificity: Plasma; synthesized in the liver.,

Validation Data



Western Blot analysis of rat cells using Cleaved-Factor Xa activated HC (I235) Polyclonal Antibody



Western blot analysis of lysates from rat liver cells, using FA10 (activated heavy chain, Cleaved-Ile235) Antibody. The lane on the right is blocked with the synthesized peptide.

Contact information

Orders: order@immunoway.com
 Support: tech@immunoway.com
 Telephone: 877-594-3616 (Toll Free), 408-747-0185
 Website: <http://www.immunoway.com>
 Address: 2200 Ringwood Ave San Jose, CA 95131 USA



Please scan the QR code to access additional product information:
**Cleaved Factor Xa
 activated HC
 (Ile235) Rabbit pAb**

For Research Use Only. Not for Use in Diagnostic Procedures.

[Antibody](#) | [ELISA Kits](#) | [Protein](#) | [Reagents](#)