

## Cleaved Factor X/ Factor X LC (Ala41) Rabbit pAb

CatalogNo: YC0082

Orthogonal Validated 

### Key Features

**Host Species**

- Rabbit

**Reactivity**

- Human,Rat,Mouse,

**Applications**

- WB,ELISA

**MW**

- 50kD (Observed)

**Isotype**

- IgG

### Recommended Dilution Ratios

**WB 1:500-1:2000****ELISA 1:20000****Not yet tested in other applications.**

### Storage

**Storage\***

-15°C to -25°C/1 year(Do not lower than -25°C)

**Formulation**

Liquid in PBS containing 50% glycerol, 0.5% BSA and 0.02% sodium azide.

### Basic Information

**Clonality**

Polyclonal

### Immunogen Information

**Immunogen**

The antiserum was produced against synthesized peptide derived from human FA10. AA range:22-71

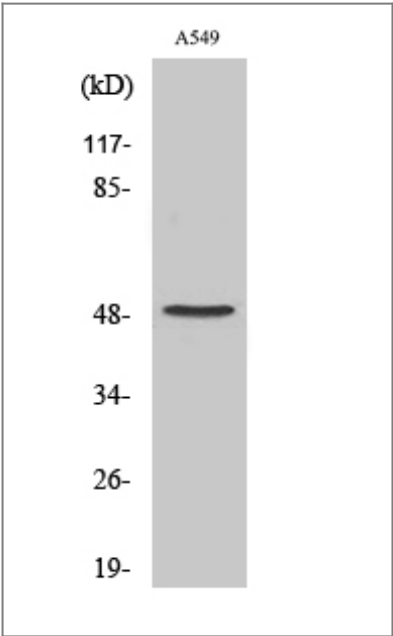
**Specificity**

Cleaved-Factor X/ Factor X LC (A41) Polyclonal Antibody detects endogenous levels of fragment of activated Factor X/ Factor X LC protein resulting from cleavage adjacent to A41.

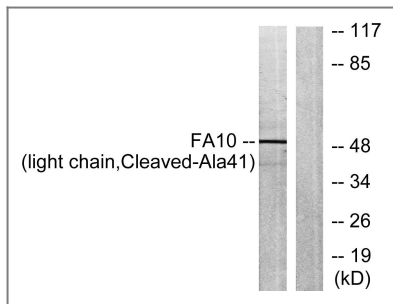
## Target Information

Gene name	F10		
Protein Name	Coagulation factor X		
	Organism	Gene ID	UniProt ID
	Human	<a href="#">2159</a> ;	<a href="#">P00742</a> ;
	Mouse		<a href="#">O88947</a> ;
Cellular Localization	Secreted.		
Tissue specificity	Plasma; synthesized in the liver.		
Function	Catalytic activity:Selective cleavage of Arg- -Thr and then Arg- -Ile bonds in prothrombin to form thrombin.,Function:Factor Xa is a vitamin K-dependent glycoprotein that converts prothrombin to thrombin in the presence of factor Va, calcium and phospholipid during blood clotting.,online information:Factor X entry,PTM:N- and O-glycosylated.,PTM:The activation peptide is cleaved by factor IXa (in the intrinsic pathway), or by factor VIIa (in the extrinsic pathway).,PTM:The iron and 2-oxoglutarate dependent 3-hydroxylation of aspartate and asparagine is (R) stereospecific within EGF domains.,PTM:The vitamin K-dependent, enzymatic carboxylation of some glutamate residues allows the modified protein to bind calcium.,similarity:Belongs to the peptidase S1 family.,similarity:Contains 1 Gla (gamma-carboxy-glutamate) domain.,similarity:Contains 1 peptidase S1 domain.,similarity:Contains 2 EGF-like domains.,subunit:The two chains are formed from a single-chain precursor by the excision of two Arg residues and are held together by 1 or more disulfide bonds.,tissue specificity:Plasma; synthesized in the liver.,		

## Validation Data



Western Blot analysis of various cells using Cleaved-Factor X/ Factor X LC (A41) Polyclonal Antibody



Western blot analysis of lysates from A549 cells, treated with etoposide 24uM 24h, using FA10 (light chain, Cleaved-Ala41) Antibody. The lane on the right is blocked with the synthesized peptide.

## Contact information

Orders: [order@immunoway.com](mailto:order@immunoway.com)  
 Support: [tech@immunoway.com](mailto:tech@immunoway.com)  
 Telephone: 877-594-3616 (Toll Free), 408-747-0185  
 Website: <http://www.immunoway.com>  
 Address: 2200 Ringwood Ave San Jose, CA 95131 USA



Please scan the QR code to access additional product information:  
**Cleaved Factor X/  
 Factor X LC (Ala41)  
 Rabbit pAb**

For Research Use Only. Not for Use in Diagnostic Procedures.

[Antibody](#) | [ELISA Kits](#) | [Protein](#) | [Reagents](#)