

## Cleaved PAR-4 (Gly48) Rabbit pAb

CatalogNo: YC0072

Orthogonal Validated 

### Key Features

#### Host Species

- Rabbit

#### Reactivity

- Human,Rat,Mouse,

#### Applications

- WB,ELISA

#### MW

- 33kD (Observed)

#### Isotype

- IgG

### Recommended Dilution Ratios

**WB 1:500-1:2000****ELISA 1:5000****Not yet tested in other applications.**

### Storage

**Storage\***

-15°C to -25°C/1 year(Do not lower than -25°C)

**Formulation**

Liquid in PBS containing 50% glycerol, 0.5% BSA and 0.02% sodium azide.

### Basic Information

**Clonality**

Polyclonal

### Immunogen Information

**Immunogen**

The antiserum was produced against synthesized peptide derived from human PAR4. AA range:29-78

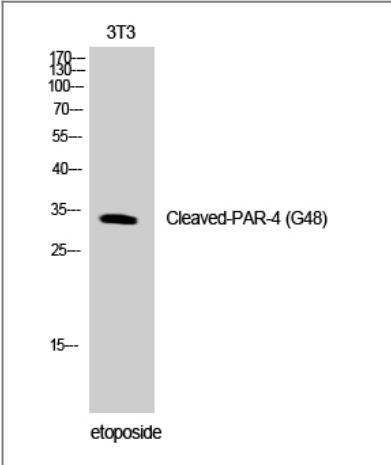
**Specificity**

Cleaved-PAR-4 (G48) Polyclonal Antibody detects endogenous levels of fragment of activated PAR-4 protein resulting from cleavage adjacent to G48.

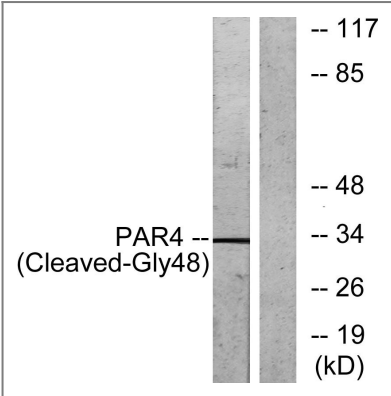
### Target Information

Gene name	F2RL3		
Protein Name	Proteinase-activated receptor 4		
	Organism	Gene ID	UniProt ID
	Human	<a href="#">9002</a> ;	<a href="#">Q96RI0</a> ;
	Mouse		<a href="#">O88634</a> ;
Cellular Localization	Cell membrane; Multi-pass membrane protein.		
Tissue specificity	Widely expressed, with highest levels in lung, pancreas, thyroid, testis and small intestine. Not expressed in brain, kidney, spinal cord and peripheral blood leukocytes. Also detected in platelets.		
Function	Function:Receptor for activated thrombin or trypsin coupled to G proteins that stimulate phosphoinositide hydrolysis. May play a role in platelets activation.,PTM:A proteolytic cleavage generates a new N-terminus that functions as a tethered ligand.,similarity:Belongs to the G-protein coupled receptor 1 family.,tissue specificity:Widely expressed, with highest levels in lung, pancreas, thyroid, testis and small intestine. Not expressed in brain, kidney, spinal cord and peripheral blood leukocytes. Also detected in platelets.,		

Validation Data



Western Blot analysis of NIH-3T3 cells using Cleaved-PAR-4 (G48) Polyclonal Antibody



Western blot analysis of lysates from NIH/3T3 cells, treated with etoposide 25uM 1h, using PAR4 (Cleaved-Gly48) Antibody. The lane on the right is blocked with the synthesized peptide.

## | Contact information

Orders: order@immunoway.com  
Support: tech@immunoway.com  
Telephone: 877-594-3616 (Toll Free), 408-747-0185  
Website: <http://www.immunoway.com>  
Address: 2200 Ringwood Ave San Jose, CA 95131 USA



Please scan the QR code to access additional product information:

**Cleaved PAR-4  
(Gly48) Rabbit pAb**

---

For Research Use Only. Not for Use in Diagnostic Procedures.

[Antibody](#) | [ELISA Kits](#) | [Protein](#) | [Reagents](#)