

Cleaved Notch 4 (Val1432) Rabbit pAb

CatalogNo: YC0071

Orthogonal Validated 

Key Features

Host Species

- Rabbit

Reactivity

- Human, Mouse, Monkey

Applications

- WB, ELISA

MW

- 59kD (Observed)

Isotype

- IgG

Recommended Dilution Ratios

WB 1:500-1:2000**ELISA 1:5000****Not yet tested in other applications.**

Storage

Storage*

-15°C to -25°C/1 year (Do not lower than -25°C)

Formulation

Liquid in PBS containing 50% glycerol, 0.5% BSA and 0.02% sodium azide.

Basic Information

Clonality

Polyclonal

Immunogen Information

Immunogen

The antiserum was produced against synthesized peptide derived from human NOTCH4. AA range: 1401-1450

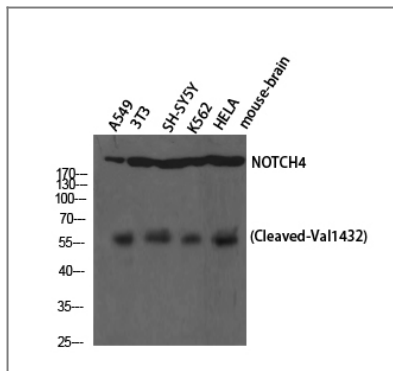
Specificity

Cleaved-Notch 4 (V1432) Polyclonal Antibody detects endogenous levels of fragment of activated Notch 4 protein resulting from cleavage adjacent to V1432.

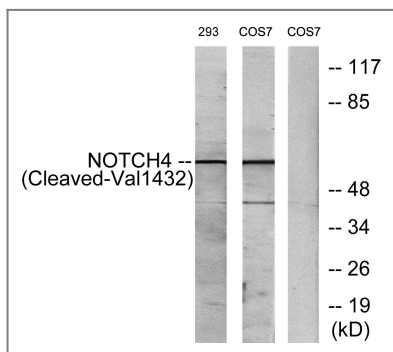
Target Information

Gene name	NOTCH4		
Protein Name	Neurogenic locus notch homolog protein 4		
	Organism	Gene ID	UniProt ID
	Human	4855;	Q99466;
	Mouse		P31695;
Cellular Localization	Cell membrane; Single-pass type I membrane protein.; [Notch 4 intracellular domain]: Nucleus. Following proteolytical processing NICD is translocated to the nucleus.		
Tissue specificity	Highly expressed in the heart, moderately in the lung and placenta and at low levels in the liver, skeletal muscle, kidney, pancreas, spleen, lymph node, thymus, bone marrow and fetal liver. No expression was seen in adult brain or peripheral blood leukocytes.		
Function	<p>Alternative products:Experimental confirmation may be lacking for some isoforms,Function:Functions as a receptor for membrane-bound ligands Jagged1, Jagged2 and Delta1 to regulate cell-fate determination. Upon ligand activation through the released notch intracellular domain (NICD) it forms a transcriptional activator complex with RBP-J kappa and activates genes of the enhancer of split locus. Affects the implementation of differentiation, proliferation and apoptotic programs. May regulate branching morphogenesis in the developing vascular system.,polymorphism:The poly-Leu region of NOTCH4 (in the signal peptide) is polymorphic and the number of Leu varies in the population (from 6 to 12).,PTM:Phosphorylated.,PTM:Synthesized in the endoplasmic reticulum as an inactive form which is proteolytically cleaved by a furin-like convertase in the trans-Golgi network before it reaches the plasma membrane to yield an active, ligand-accessible form. Cleavage results in a C-terminal fragment N(TM) and a N-terminal fragment N(EC). Following ligand binding, it is cleaved by TNF-alpha converting enzyme (TACE) to yield a membrane-associated intermediate fragment called notch extracellular truncation (NEXT). This fragment is then cleaved by presenilin dependent gamma-secretase to release a notch-derived peptide containing the intracellular domain (NICD) from the membrane.,similarity:Belongs to the NOTCH family.,similarity:Contains 28 EGF-like domains.,similarity:Contains 3 LNR (Lin/Notch) repeats.,similarity:Contains 5 ANK repeats.,subcellular location:Following proteolytical processing NICD is translocated to the nucleus.,subunit:Heterodimer of a C-terminal fragment N(TM) and a N-terminal fragment N(EC) which are probably linked by disulfide bonds (By similarity). Interacts with MAML1, MAML2 and MAML3 which act as transcriptional coactivators for NOTCH4.,tissue specificity:Highly expressed in the heart, moderately in the lung and placenta and at low levels in the liver, skeletal muscle, kidney, pancreas, spleen, lymph node, thymus, bone marrow and fetal liver. No expression was seen in adult brain or peripheral blood leukocytes.,</p>		

| Validation Data



Western Blot analysis of A549 NIH-3T3 SH-SY5Y K562 HELA cells using Cleaved-Notch 4 (V1432) Polyclonal Antibody diluted at 1:1000



Western blot analysis of lysates from 293 and COS7 cells, treated with etoposide 25uM 1h, using NOTCH4 (Cleaved-Val1432) Antibody. The lane on the right is blocked with the synthesized peptide.

Contact information

Orders: order@immunoway.com
 Support: tech@immunoway.com
 Telephone: 877-594-3616 (Toll Free), 408-747-0185
 Website: <http://www.immunoway.com>
 Address: 2200 Ringwood Ave San Jose, CA 95131 USA



Please scan the QR code to access additional product information:
Cleaved Notch 4 (Val1432) Rabbit pAb

For Research Use Only. Not for Use in Diagnostic Procedures.

[Antibody](#) | [ELISA Kits](#) | [Protein](#) | [Reagents](#)