

## Cleaved MMP-23 (Tyr79) Rabbit pAb

CatalogNo: YC0064

Orthogonal Validated 

### Key Features

#### Host Species

- Rabbit

#### Reactivity

- Human, Mouse, Rat

#### Applications

- WB, ELISA

#### MW

- 36kD (Observed)

#### Isotype

- IgG

### Recommended Dilution Ratios

**WB 1:500-1:2000****ELISA 1:20000****Not yet tested in other applications.**

### Storage

**Storage\***

-15°C to -25°C/1 year (Do not lower than -25°C)

**Formulation**

Liquid in PBS containing 50% glycerol, 0.5% BSA and 0.02% sodium azide.

### Basic Information

**Clonality**

Polyclonal

### Immunogen Information

**Immunogen**

The antiserum was produced against synthesized peptide derived from human MMP23. AA range: 60-109

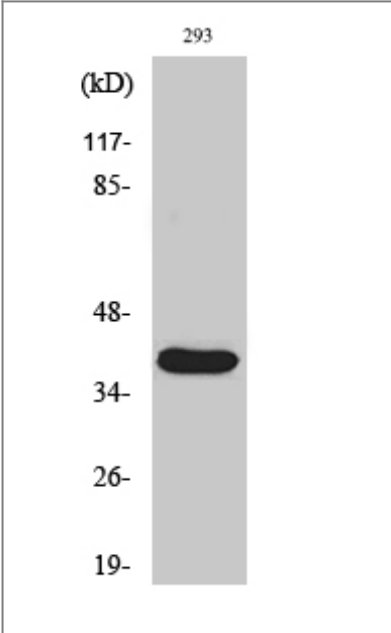
**Specificity**

Cleaved-MMP-23 (Y79) Polyclonal Antibody detects endogenous levels of fragment of activated MMP-23 protein resulting from cleavage adjacent to Y79.

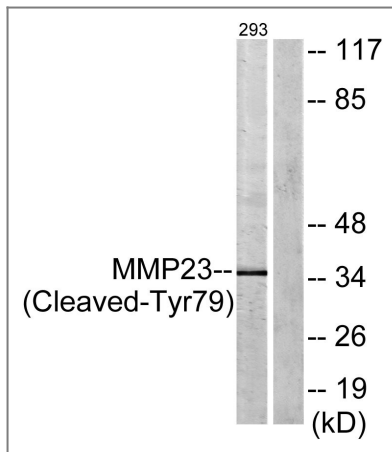
### Target Information

Gene name	MMP23B												
Protein Name	Matrix metalloproteinase-23												
	<table><tr><th>Organism</th><th>Gene ID</th><th>UniProt ID</th></tr><tr><td>Human</td><td><a href="#">8510</a>;</td><td><a href="#">O75900</a>;</td></tr><tr><td>Mouse</td><td><a href="#">26561</a>;</td><td><a href="#">O88676</a>;</td></tr><tr><td>Rat</td><td><a href="#">94339</a>;</td><td><a href="#">O88272</a>;</td></tr></table>	Organism	Gene ID	UniProt ID	Human	<a href="#">8510</a> ;	<a href="#">O75900</a> ;	Mouse	<a href="#">26561</a> ;	<a href="#">O88676</a> ;	Rat	<a href="#">94339</a> ;	<a href="#">O88272</a> ;
Organism	Gene ID	UniProt ID											
Human	<a href="#">8510</a> ;	<a href="#">O75900</a> ;											
Mouse	<a href="#">26561</a> ;	<a href="#">O88676</a> ;											
Rat	<a href="#">94339</a> ;	<a href="#">O88272</a> ;											
Cellular Localization	Endoplasmic reticulum membrane ; Single-pass type II membrane protein . Membrane ; Single-pass type II membrane protein . A secreted form produced by proteolytic cleavage may also exist. .												
Tissue specificity	Predominantly expressed in ovary, testis and prostate.												
Function	cofactor: Binds 1 zinc ion per subunit., enzyme regulation: Inhibited by TIMP2., Function: Protease., PTM: N-glycosylated., PTM: Proteolytic cleavage might yield an active form., similarity: Belongs to the peptidase M10A family., similarity: Contains 1 Ig-like C2-type (immunoglobulin-like) domain., subcellular location: A secreted form produced by proteolytic cleavage seems also to exist., tissue specificity: Predominantly expressed in ovary, testis and prostate.,												

| Validation Data



Western Blot analysis of various cells using Cleaved-MMP-23 (Y79) Polyclonal Antibody



Western blot analysis of lysates from 293 cells, treated with etoposide 25uM 1h, using MMP23 (Cleaved-Tyr79) Antibody. The lane on the right is blocked with the synthesized peptide.

## Contact information

Orders: [order@immunoway.com](mailto:order@immunoway.com)  
 Support: [tech@immunoway.com](mailto:tech@immunoway.com)  
 Telephone: 877-594-3616 (Toll Free), 408-747-0185  
 Website: <http://www.immunoway.com>  
 Address: 2200 Ringwood Ave San Jose, CA 95131 USA



Please scan the QR code to access additional product information:  
**Cleaved MMP-23 (Tyr79) Rabbit pAb**

For Research Use Only. Not for Use in Diagnostic Procedures.

[Antibody](#) | [ELISA Kits](#) | [Protein](#) | [Reagents](#)