

Cleaved KLK11 (Ile54) Rabbit pAb

CatalogNo: YC0055

Orthogonal Validated 

Key Features

Host Species

- Rabbit

Reactivity

- Human,Rat,Mouse,

Applications

- WB,ELISA

MW

- 25kD (Observed)

Isotype

- IgG

Recommended Dilution Ratios

WB 1:500-1:2000**ELISA 1:10000****Not yet tested in other applications.**

Storage

Storage*

-15°C to -25°C/1 year(Do not lower than -25°C)

Formulation

Liquid in PBS containing 50% glycerol, 0.5% BSA and 0.02% sodium azide.

Basic Information

Clonality

Polyclonal

Immunogen Information

Immunogen

The antiserum was produced against synthesized peptide derived from human Kallikrein-11. AA range:35-84

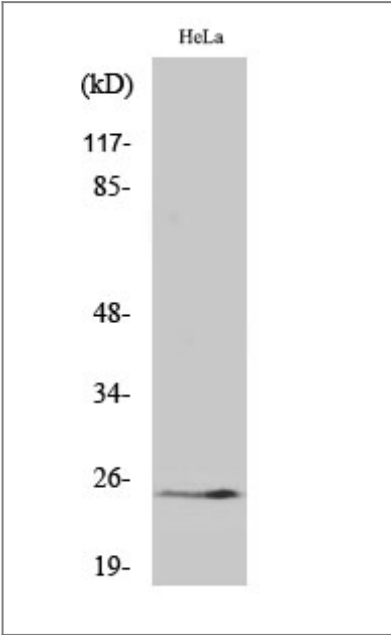
Specificity

Cleaved-KLK11 (I54) Polyclonal Antibody detects endogenous levels of fragment of activated KLK11 protein resulting from cleavage adjacent to I54.

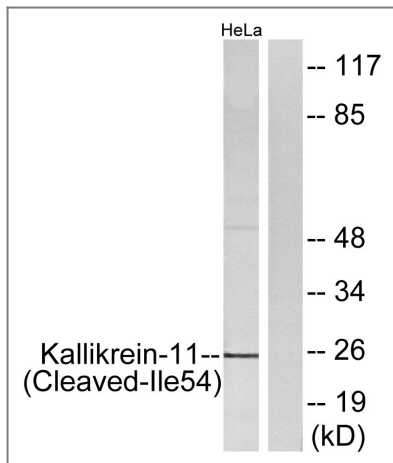
Target Information

Gene name	KLK11		
Protein Name	Kallikrein-11		
	Organism	Gene ID	UniProt ID
	Human	11012 ;	Q9UBX7 ;
	Mouse		Q9QYN3 ;
Cellular Localization	[Isoform 1]: Secreted.; [Isoform 2]: Golgi apparatus.		
Tissue specificity	Expressed in brain, skin and prostate. Isoform 1 is expressed preferentially in brain. Isoform 2 is expressed in prostate. Present in seminal plasma at concentrations ranging from 2 to 37 microg/mL (at protein level).		
Function	Function:Possible multifunctional protease. Efficiently cleaves 'bz-Phe-Arg-4-methylcoumaryl-7-amide', a kallikrein substrate, and weakly cleaves other substrates for kallikrein and trypsin. Cleaves synthetic peptides after arginine but not lysine residues.,PTM:About 40% of KLK11 is inactivated by internal cleavage after Arg-188. This proteolytic inactivation may be effected by plasminogen.,similarity:Belongs to the peptidase S1 family.,similarity:Belongs to the peptidase S1 family. Kallikrein subfamily.,similarity:Contains 1 peptidase S1 domain.,tissue specificity:Expressed in brain, skin and prostate. Isoform 1 is expressed preferentially in brain; isoform 2 in prostate. Present in seminal plasma at concentrations ranging from 2 to 37 microg/mL (at protein level).,		

Validation Data



Western Blot analysis of various cells using Cleaved-KLK11 (I54) Polyclonal Antibody



Western blot analysis of lysates from HeLa cells, treated with etoposide 25uM 24H, using Kallikrein-11 (Cleaved-Ile54) Antibody. The lane on the right is blocked with the synthesized peptide.

Contact information

Orders: order@immunoway.com
 Support: tech@immunoway.com
 Telephone: 877-594-3616 (Toll Free), 408-747-0185
 Website: <http://www.immunoway.com>
 Address: 2200 Ringwood Ave San Jose, CA 95131 USA



Please scan the QR code to access additional product information:
Cleaved KLK11 (Ile54) Rabbit pAb

For Research Use Only. Not for Use in Diagnostic Procedures.

[Antibody](#) | [ELISA Kits](#) | [Protein](#) | [Reagents](#)