

ICAD Rabbit pAb

CatalogNo: YC0054

Key Features

Host Species

- Rabbit

Reactivity

- Human,Rat,Mouse,

Applications

- WB,IHC,IF,ELISA

MW

- 37kD (Observed)

Isotype

- IgG

Recommended Dilution Ratios

WB 1:500-1:2000

IHC 1:100-1:300

ELISA 1:20000

IF 1:50-200

Storage

Storage* -15°C to -25°C/1 year(Do not lower than -25°C)

Formulation Liquid in PBS containing 50% glycerol, 0.5% BSA and 0.02% sodium azide.

Basic Information

Clonality Polyclonal

Immunogen Information

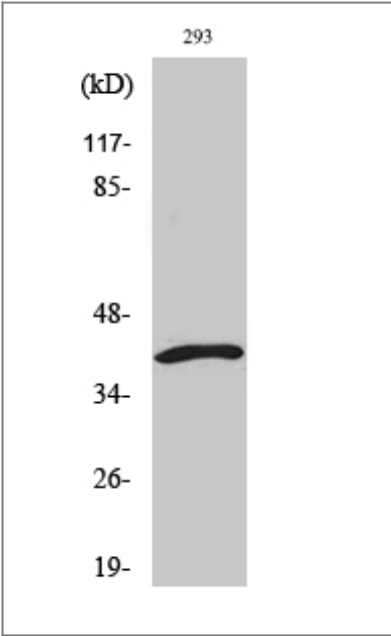
Immunogen The antiserum was produced against synthesized peptide derived from human DFFA. AA range:175-224

Specificity ICAD Polyclonal Antibody detects endogenous levels of ICAD protein.

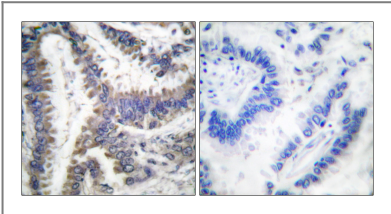
Target Information

Gene name	DFFA		
Protein Name	DNA fragmentation factor subunit alpha		
	Organism	Gene ID	UniProt ID
	Human	1676 ;	O00273 ;
	Mouse		O54786 ;
Cellular Localization	Cytoplasm.		
Tissue specificity	Breast,Coronary artery,Epithelium,Eye,Kidney,Skeletal muscle,		
Function	Function:Inhibitor of the caspase-activated DNase (DFF40).,PTM:Caspase-3 cleaves DFF45 at 2 sites to generate an active factor.,PTM:Phosphorylated upon DNA damage, probably by ATM or ATR.,similarity:Contains 1 CIDE-N domain.,subunit:Heterodimer of DFFA and DFFB.,		

| Validation Data



Western Blot analysis of various cells using ICAD Polyclonal Antibody



Immunohistochemistry analysis of paraffin-embedded human lung carcinoma, using DFF45 (Cleaved-Asp224) Antibody. The picture on the right is blocked with the synthesized peptide.

| Contact information

Orders: order@immunoway.com
Support: tech@immunoway.com
Telephone: 877-594-3616 (Toll Free), 408-747-0185
Website: <http://www.immunoway.com>
Address: 2200 Ringwood Ave San Jose, CA 95131 USA



Please scan the QR code
to access additional
product information:
ICAD Rabbit pAb

For Research Use Only. Not for Use in Diagnostic Procedures.

[Antibody](#) | [ELISA Kits](#) | [Protein](#) | [Reagents](#)