

Cleaved Ephrin-A2 (Asn188) Rabbit pAb

CatalogNo: YC0052

Orthogonal Validated 

Key Features

Host Species

- Rabbit

Reactivity

- Human, Mouse

Applications

- WB, ELISA

MW

- 21kD (Observed)

Isotype

- IgG

Recommended Dilution Ratios

WB 1:500-1:2000**ELISA 1:20000****Not yet tested in other applications.**

Storage

Storage*

-15°C to -25°C/1 year (Do not lower than -25°C)

Formulation

Liquid in PBS containing 50% glycerol, 0.5% BSA and 0.02% sodium azide.

Basic Information

Clonality

Polyclonal

Immunogen Information

Immunogen

The antiserum was produced against synthesized peptide derived from human EFNA2. AA range: 139-188

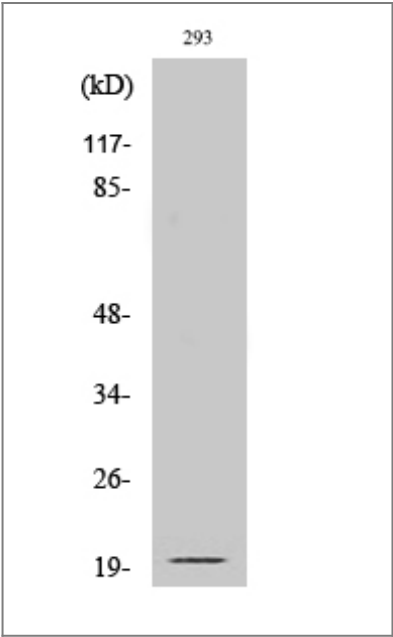
Specificity

Cleaved-Ephrin-A2 (N188) Polyclonal Antibody detects endogenous levels of fragment of activated Ephrin-A2 protein resulting from cleavage adjacent to N188.

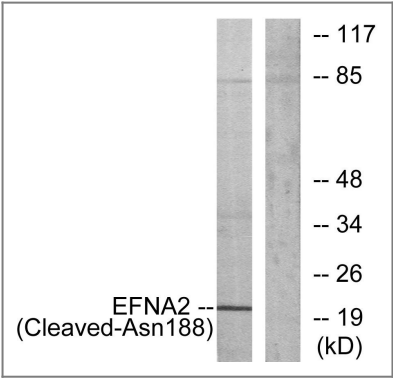
Target Information

Gene name	EFNA2		
Protein Name	Ephrin-A2		
	Organism	Gene ID	UniProt ID
	Human	1943 ;	O43921 ;
	Mouse	13637 ;	P52801 ;
Cellular Localization	Cell membrane ; Lipid-anchor, GPI-anchor .		
Tissue specificity	Brain,		
Function	similarity:Belongs to the ephrin family.,subunit:Binds to the receptor tyrosine kinases EPHA3, EPHA4 and EPHA5.,		

Validation Data



Western Blot analysis of various cells using Cleaved-Ephrin-A2 (N188) Polyclonal Antibody



Western blot analysis of lysates from 293 cells, treated with etoposide 25uM 1h, using EFNA2 (Cleaved-Asn188) Antibody. The lane on the right is blocked with the synthesized peptide.

| Contact information

Orders: order@immunoway.com
Support: tech@immunoway.com
Telephone: 877-594-3616 (Toll Free), 408-747-0185
Website: <http://www.immunoway.com>
Address: 2200 Ringwood Ave San Jose, CA 95131 USA



Please scan the QR code to access additional product information:

Cleaved Ephrin-A2 (Asn188) Rabbit pAb

For Research Use Only. Not for Use in Diagnostic Procedures.

[Antibody](#) | [ELISA Kits](#) | [Protein](#) | [Reagents](#)