

Cleaved CD97 α (Leu530) Rabbit pAb

CatalogNo: YC0047

Key Features

Host Species

- Rabbit

Reactivity

- Human,Rat,Mouse,

Applications

- WB,ELISA

MW

- 55kD (Observed)

Isotype

- IgG

Recommended Dilution Ratios

WB 1:500-1:2000

ELISA 1:5000

Not yet tested in other applications.

Storage

Storage*

-15°C to -25°C/1 year(Do not lower than -25°C)

Formulation

Liquid in PBS containing 50% glycerol, 0.5% BSA and 0.02% sodium azide.

Basic Information

Clonality

Polyclonal

Immunogen Information

Immunogen

The antiserum was produced against synthesized peptide derived from human CD97 α . AA range:481-530

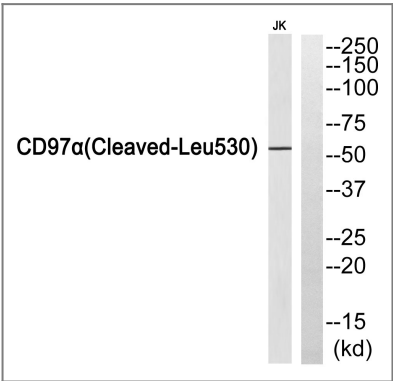
Specificity

Cleaved-CD97 α (L530) Polyclonal Antibody detects endogenous levels of fragment of activated CD97 α protein resulting from cleavage adjacent to L530.

Target Information

| | | | |
|-----------------------|---|-----------------------|--------------------------|
| Gene name | CD97 | | |
| Protein Name | CD97 antigen | | |
| | Organism | Gene ID | UniProt ID |
| | Human | 976 ; | P48960 ; |
| | Mouse | | Q9Z0M6 ; |
| Cellular Localization | Cell membrane ; Multi-pass membrane protein .; [Adhesion G protein-coupled receptor E5 subunit alpha]: Secreted, extracellular space . | | |
| Tissue specificity | Broadly expressed, found on most hematopoietic cells, including activated lymphocytes, monocytes, macrophages, dendritic cells, and granulocytes. Expressed also abundantly by smooth muscle cells. Expressed in thyroid, colorectal, gastric, esophageal and pancreatic carcinomas too. Expression are increased under inflammatory conditions in the CNS of multiple sclerosis and in synovial tissue of patients with rheumatoid arthritis. Increased expression of CD97 in the synovium is accompanied by detectable levels of soluble CD97 in the synovial fluid. | | |
| Function | Domain:Binding to chondroitin sulfate is mediated by the fourth EGF domain.,Domain:The first two EGF domains mediate the interaction with DAF. A third tandemly arranged EGF domain is necessary for the structural integrity of the binding region.,Function:Receptor potentially involved in both adhesion and signaling processes early after leukocyte activation. Plays an essential role in leukocyte migration.,induction:Rapid up-regulation during lymphocyte activation.,PTM:Proteolytically cleaved into 2 subunits, an extracellular alpha subunit and a seven-transmembrane subunit.,similarity:Belongs to the G-protein coupled receptor 2 family. LN-TM7 subfamily.,similarity:Contains 1 GPS domain.,similarity:Contains 5 EGF-like domains.,subunit:Forms a heterodimer, consisting of a large extracellular region (alpha subunit) non-covalently linked to a seven-transmembrane moiety (beta subunit). Interacts with complement decay-accelerating factor (DAF). The largest isoform (isoform 1) interacts with chondroitin sulfate.,tissue specificity:Broadly expressed, found on most hematopoietic cells, including activated lymphocytes, monocytes, macrophages, dendritic cells, and granulocytes. Expressed also abundantly by smooth muscle cells. Expressed in thyroid, colorectal, gastric, esophageal and pancreatic carcinomas too. Expression are increased under inflammatory conditions in the CNS of multiple sclerosis and in synovial tissue of patients with rheumatoid arthritis. Increased expression of CD97 in the synovium is accompagnied by detectable levels of soluble CD97 in the synovial fluid., | | |

| Validation Data



Western blot analysis of CD97α (Cleaved-Leu530) Antibody. The lane on the right is blocked with the CD97α (Cleaved-Leu530) peptide.

| Contact information

Orders: order@immunoway.com
Support: tech@immunoway.com
Telephone: 877-594-3616 (Toll Free), 408-747-0185
Website: <http://www.immunoway.com>
Address: 2200 Ringwood Ave San Jose, CA 95131 USA



Please scan the QR code
to access additional
product information:
Cleaved CD97 α
(Leu530) Rabbit
pAb

For Research Use Only. Not for Use in Diagnostic Procedures.

[Antibody](#) | [ELISA Kits](#) | [Protein](#) | [Reagents](#)