

Cleaved Cathepsin Z (Leu62) Rabbit pAb

CatalogNo: YC0046

Orthogonal Validated 

Key Features

Host Species

- Rabbit

Reactivity

- Human, Monkey

Applications

- WB, ELISA

MW

- 27kD (Observed)

Isotype

- IgG

Recommended Dilution Ratios

WB 1:500-1:2000**ELISA 1:5000****Not yet tested in other applications.**

Storage

Storage*

-15°C to -25°C/1 year (Do not lower than -25°C)

Formulation

Liquid in PBS containing 50% glycerol, 0.5% BSA and 0.02% sodium azide.

Basic Information

Clonality

Polyclonal

Immunogen Information

Immunogen

The antiserum was produced against synthesized peptide derived from human CATZ. AA range: 43-92

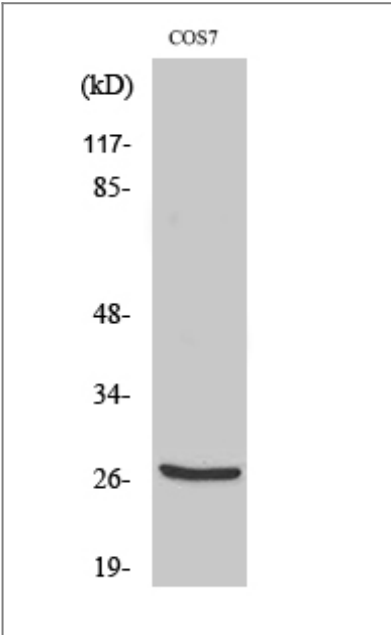
Specificity

Cleaved-Cathepsin Z (L62) Polyclonal Antibody detects endogenous levels of fragment of activated Cathepsin Z protein resulting from cleavage adjacent to L62.

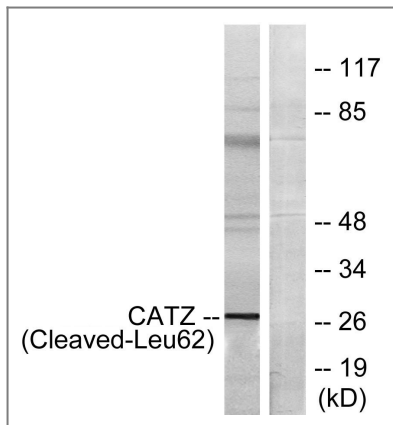
Target Information

Gene name	CTSZ		
Protein Name	Cathepsin Z		
	Organism	Gene ID	UniProt ID
	Human	1522;	Q9UBR2;
	Mouse		Q9WUU7;
Cellular Localization	Lysosome.		
Tissue specificity	Widely expressed.		
Function	Catalytic activity:Release of C-terminal amino acid residues with broad specificity, but lacks action on C-terminal proline. Shows weak endopeptidase activity.,Function:Exhibits carboxy-monoamidase as well as carboxy-dipeptidase activity.,similarity:Belongs to the peptidase C1 family.,tissue specificity:Widely expressed.,		

Validation Data



Western Blot analysis of various cells using Cleaved-Cathepsin Z (L62) Polyclonal Antibody



Western blot analysis of lysates from COS7 cells, treated with etoposide 25uM 1h, using CATZ (Cleaved-Leu62) Antibody. The lane on the right is blocked with the synthesized peptide.

Contact information

Orders: order@immunoway.com
 Support: tech@immunoway.com
 Telephone: 877-594-3616 (Toll Free), 408-747-0185
 Website: <http://www.immunoway.com>
 Address: 2200 Ringwood Ave San Jose, CA 95131 USA



Please scan the QR code to access additional product information:
Cleaved Cathepsin Z (Leu62) Rabbit pAb

For Research Use Only. Not for Use in Diagnostic Procedures.

[Antibody](#) | [ELISA Kits](#) | [Protein](#) | [Reagents](#)