

Cleaved Caspase-5 p10 (Ser331) Rabbit pAb

CatalogNo: YC0030

Orthogonal Validated 

Key Features

Host Species

- Rabbit

Reactivity

- Human,

Applications

- WB, ELISA

MW

- 10kD (Observed)

Isotype

- IgG

Recommended Dilution Ratios

WB 1:500-1:2000**ELISA 1:20000****Not yet tested in other applications.**

Storage

Storage*

-15°C to -25°C/1 year (Do not lower than -25°C)

Formulation

Liquid in PBS containing 50% glycerol, 0.5% BSA and 0.02% sodium azide.

Basic Information

Clonality

Polyclonal

Immunogen Information

Immunogen

The antiserum was produced against synthesized peptide derived from human Caspase 5. AA range: 312-361

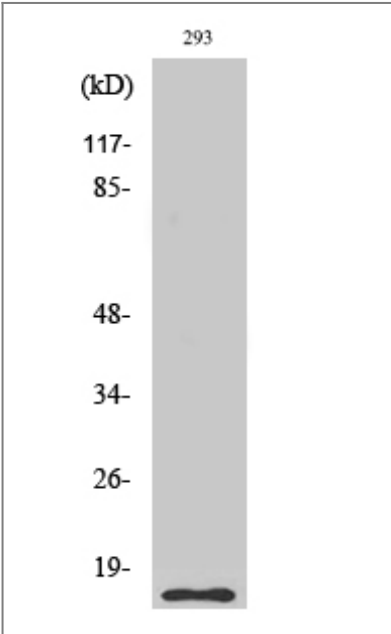
Specificity

Cleaved-Caspase-5 p10 (S331) Polyclonal Antibody detects endogenous levels of fragment of activated Caspase-5 p10 protein resulting from cleavage adjacent to S331.

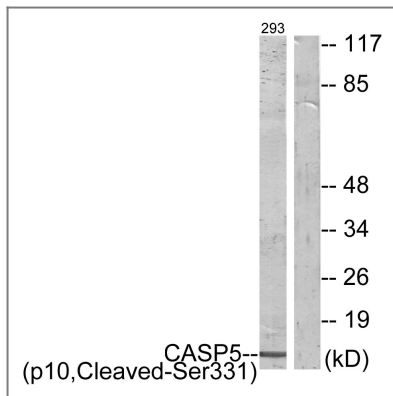
Target Information

Gene name	CASP5		
Protein Name	Caspase5		
	Organism	Gene ID	UniProt ID
	Human	838 ;	P51878 ;
Cellular Localization	neuron projection,neuronal cell body,IPAF inflammasome complex,NLRP1 inflammasome complex,NLRP3 inflammasome complex,AIM2 inflammasome complex,		
Tissue specificity	Expressed in barely detectable amounts in most tissues except brain, highest levels being found in lung, liver and skeletal muscle.		
Function	Catalytic activity:Strict requirement for Asp at the P1 position. It has a preferred cleavage sequence of Tyr-Val-Ala-Asp- - but also cleaves at Asp-Glu-Val-Asp- -.Function:Mediator of programmed cell death (apoptosis).,PTM:The two subunits are derived from the precursor sequence by an autocatalytic mechanism.,similarity:Belongs to the peptidase C14A family.,similarity:Contains 1 CARD domain.,subunit:Heterotetramer that consists of two anti-parallel arranged heterodimers, each one formed by a 20 kDa (p20) and a 10 kDa (p10) subunits.,tissue specificity:Expressed in barely detectable amounts in most tissues except brain, highest levels being found in lung, liver and skeletal muscle.,		

Validation Data



Western Blot analysis of various cells using Cleaved-Caspase-5 p10 (S331) Polyclonal Antibody diluted at 1:1000



Western blot analysis of lysates from 293 cells, treated with etoposide 25uM 1h, using Caspase 5 (p10,Cleaved-Ser331) Antibody. The lane on the right is blocked with the synthesized peptide.

Contact information

Orders: order@immunoway.com
 Support: tech@immunoway.com
 Telephone: 877-594-3616 (Toll Free), 408-747-0185
 Website: <http://www.immunoway.com>
 Address: 2200 Ringwood Ave San Jose, CA 95131 USA



Please scan the QR code to access additional product information:
**Cleaved Caspase-5
 p10 (Ser331) Rabbit
 pAb**

For Research Use Only. Not for Use in Diagnostic Procedures.

[Antibody](#) | [ELISA Kits](#) | [Protein](#) | [Reagents](#)