

Cleaved Caspase-4/5 p20 (Asp270/Asp311) Rabbit pAb

CatalogNo: YC0029

Key Features

Host Species

- Rabbit

Reactivity

- Human

Applications

- WB, ELISA

MW

- 47,22kD (Observed)

Isotype

- IgG

Recommended Dilution Ratios

WB 1:500-1:2000

ELISA 1:40000

Not yet tested in other applications.

Storage

Storage*

-15°C to -25°C/1 year(Do not lower than -25°C)

Formulation

Liquid in PBS containing 50% glycerol, 0.5% BSA and 0.02% sodium azide.

Basic Information

Clonality

Polyclonal

Immunogen Information

Immunogen

The antiserum was produced against synthesized peptide derived from human Caspase 4/5. AA range:221-270

Specificity

Cleaved-Caspase-4/5 p20 (D270/D311) Polyclonal Antibody detects endogenous levels of fragment of activated Caspase-4/5 p20 protein resulting from cleavage adjacent to D270/D311.

Target Information

Gene name CASP4

Protein Name Caspase4

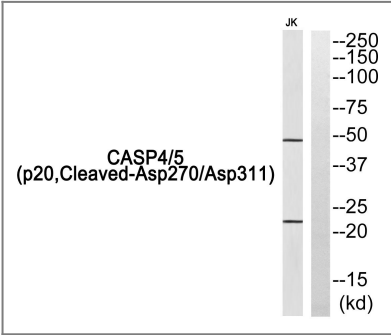
Organism	Gene ID	UniProt ID
Human	837 ;	P49662 ; P51878 ;

Cellular Localization Cytoplasm, cytosol . Endoplasmic reticulum membrane ; Peripheral membrane protein ; Cytoplasmic side . Mitochondrion . Inflammasome . Secreted . Predominantly localizes to the endoplasmic reticulum (ER). Association with the ER membrane requires TMEM214 (PubMed:15123740). Released in the extracellular milieu by keratinocytes following UVB irradiation (PubMed:22246630). .

Tissue specificity Widely expressed, including in keratinocytes and colonic and small intestinal epithelial cells (at protein level). Not detected in brain.

Function Catalytic activity:Strict requirement for Asp at the P1 position. It has a preferred cleavage sequence of Tyr-Val-Ala-Asp-|- but also cleaves at Asp-Glu-Val-Asp-|-. ,Function:Involved in the activation cascade of caspases responsible for apoptosis execution. Cleaves caspase-1.,PTM:The two subunits are derived from the precursor sequence by an autocatalytic mechanism or by cleavage by Caspase-8.,similarity:Belongs to the peptidase C14A family.,similarity:Contains 1 CARD domain.,subunit:Heterotetramer that consists of two anti-parallel arranged heterodimers, each one formed by a small and a large subunit.,tissue specificity:Widely expressed, with highest levels in spleen and lung. Moderate expression in heart and liver, low expression in skeletal muscle, kidney and testis. Not found in the brain.,

Validation Data



Western blot analysis of Caspase 4/5 (p20, Cleaved-Asp270/Asp311) Antibody. The lane on the right is blocked with the Caspase 4/5 (p20, Cleaved-Asp270/Asp311) peptide.

Contact information

Orders: order@immunoway.com
Support: tech@immunoway.com
Telephone: 877-594-3616 (Toll Free), 408-747-0185
Website: http://www.immunoway.com
Address: 2200 Ringwood Ave San Jose, CA 95131 USA



Please scan the QR code
to access additional
product information:

**Cleaved
Caspase-4/5 p20
(Asp270/Asp311)
Rabbit pAb**

For Research Use Only. Not for Use in Diagnostic Procedures.

[Antibody](#) | [ELISA Kits](#) | [Protein](#) | [Reagents](#)