

Cleaved C1s HC (Arg437) Rabbit pAb

CatalogNo: YC0020 Orthogonal Validated 

Key Features

Host Species

- Rabbit

Reactivity

- Human,Rat

Applications

- WB,ELISA

MW

- 47kD,76kD (Observed)

Isotype

- IgG

Storage

Storage* -15°C to -25°C/1 year(Do not lower than -25°C)

Formulation Liquid in PBS containing 50% glycerol, 0.5% BSA and 0.02% sodium azide.

Recommended Dilution Ratios

WB 1:500-1:2000

ELISA 1:20000

Not yet tested in other applications.

Basic Information

Clonality Polyclonal

Immunogen Information

Immunogen The antiserum was produced against synthesized peptide derived from human C1S. AA range:388-437

Specificity Cleaved-C1s HC (R437) Polyclonal Antibody detects endogenous levels of fragment of activated C1s HC protein resulting from cleavage adjacent to R437.

Target Information

Gene name C1S

Protein Name Complement C1s subcomponent

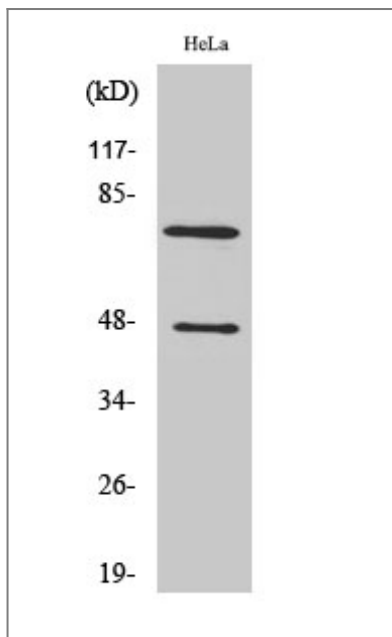
Organism	Gene ID	UniProt ID
Human	716;	P09871;

Cellular Localization extracellular region,extracellular exosome,blood microparticle,

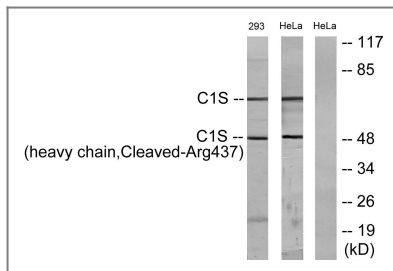
Tissue specificity Liver,Peripheral blood leukocyte,Plasma,PNS,

Function Catalytic activity: Cleavage of Arg-|-Ala bond in complement component C4 to form C4a and C4b, and Lys(or Arg)-|-Lys bond in complement component C2 to form C2a and C2b: the 'classical' pathway C3 convertase., Disease: Defects in C1S are the cause of selective C1s deficiency [MIM:120580]; that is associated with early onset multiple autoimmune diseases., enzyme regulation: Inhibited by SERPING1., Function: C1s B chain is a serine protease that combines with C1q and C1r to form C1, the first component of the classical pathway of the complement system. C1r activates C1s so that it can, in turn, activate C2 and C4., online information: C1S mutation db, PTM: The iron and 2-oxoglutarate dependent 3-hydroxylation of aspartate and asparagine is (R) stereospecific within EGF domains., similarity: Belongs to the peptidase S1 family., similarity: Contains 1 EGF-like domain., similarity: Contains 1 peptidase S1 domain., similarity: Contains 2 CUB domains., similarity: Contains 2 Sushi (CCP/SCR) domains., subunit: C1 is a calcium-dependent trimolecular complex of C1q, C1r and C1s in the molar ration of 1:2:2. Activated C1s is an disulfide-linked heterodimer of a heavy chain and a light chain.,

Validation Data



Western Blot analysis of various cells using Cleaved-C1s HC (R437) Polyclonal Antibody



Western blot analysis of lysates from 293 and HeLa cells, treated with etoposide 25uM 1h, using C1S (heavy chain, Cleaved-Arg437) Antibody. The lane on the right is blocked with the synthesized peptide.

Contact information

Orders: order@immunoway.com
 Support: tech@immunoway.com
 Telephone: 877-594-3616 (Toll Free), 408-747-0185
 Website: <http://www.immunoway.com>
 Address: 2200 Ringwood Ave San Jose, CA 95131 USA



Please scan the QR code to access additional product information:
Cleaved C1s HC (Arg437) Rabbit pAb

For Research Use Only. Not for Use in Diagnostic Procedures.

[Antibody](#) | [ELISA Kits](#) | [Protein](#) | [Reagents](#)