

## Cleaved C1r LC (Ile464) Rabbit pAb

CatalogNo: YC0019 **Orthogonal Validated** 

### Key Features

#### Host Species

- Rabbit

#### Reactivity

- Human

#### Applications

- WB, ELISA

#### MW

- 27kD (Observed)

#### Isotype

- IgG

### Storage

**Storage\*** -15°C to -25°C/1 year (Do not lower than -25°C)**Formulation** Liquid in PBS containing 50% glycerol, 0.5% BSA and 0.02% sodium azide.

### Recommended Dilution Ratios

**WB 1:500-1:2000****ELISA 1:20000****Not yet tested in other applications.**

### Basic Information

**Clonality** Polyclonal

### Immunogen Information

**Immunogen** The antiserum was produced against synthesized peptide derived from human C1R. AA range:445-494**Specificity** Cleaved-C1r LC (I464) Polyclonal Antibody detects endogenous levels of fragment of activated C1r LC protein resulting from cleavage adjacent to I464.

### Target Information

**Gene name** C1R  
**Protein Name** Complement C1r subcomponent

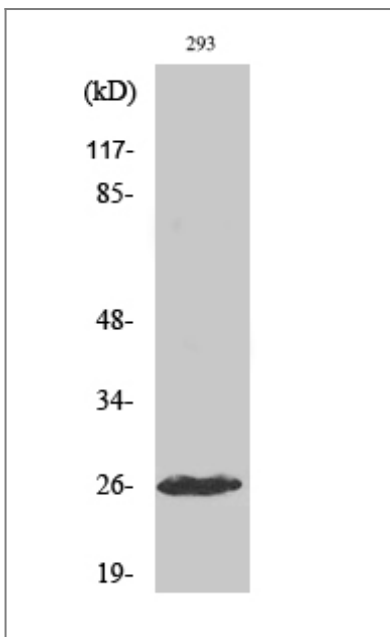
Organism	Gene ID	UniProt ID
Human	<a href="#">715;</a>	<a href="#">P00736;</a>

**Cellular Localization** Secreted .

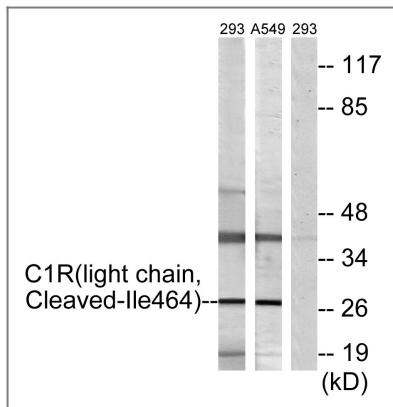
**Tissue specificity** Adipose tissue,Colon endothelium,Liver,Plasma,Skin,

**Function** Catalytic activity:Selective cleavage of Lys(or Arg)-|-Ile bond in complement subcomponent C1s to form the active form of C1s (EC 3.4.21.42).,Function:C1r B chain is a serine protease that combines with C1q and C1s to form C1, the first component of the classical pathway of the complement system.,polymorphism:Complement component C1r deficiency [MIM:216950] leads to the failure of the classical complement system activation pathway (C1 deficiency). Individuals with C1 deficiency are highly susceptible to infections by microorganisms and have greater risk in developing autoimmune diseases such as systemic lupus erythematosus (SLE).,PTM:The iron and 2-oxoglutarate dependent 3-hydroxylation of aspartate and asparagine is (R) stereospecific within EGF domains.,similarity:Belongs to the peptidase S1 family.,similarity:Contains 1 EGF-like domain.,similarity:Contains 1 peptidase S1 domain.,similarity:Contains 2 CUB domains.,similarity:Contains 2 Sushi (CCP/SCR) domains.,subunit:C1 is a calcium-dependent trimolecular complex of C1q, C1r and C1s in the molar ration of 1:2:2. C1r is a dimer of identical chains, each of which is activated by cleavage into two chains, A and B, connected by disulfide bonds.,

## Validation Data



Western Blot analysis of various cells using Cleaved-C1r LC (I464) Polyclonal Antibody



Western blot analysis of lysates from 293 and A549 cells, treated with etoposide 25uM 1h, using C1R (light chain, Cleaved-Ile464) Antibody. The lane on the right is blocked with the synthesized peptide.

## Contact information

Orders: [order@immunoway.com](mailto:order@immunoway.com)  
 Support: [tech@immunoway.com](mailto:tech@immunoway.com)  
 Telephone: 877-594-3616 (Toll Free), 408-747-0185  
 Website: <http://www.immunoway.com>  
 Address: 2200 Ringwood Ave San Jose, CA 95131 USA



Please scan the QR code to access additional product information:  
**Cleaved C1r LC (Ile464) Rabbit pAb**

For Research Use Only. Not for Use in Diagnostic Procedures.

[Antibody](#) | [ELISA Kits](#) | [Protein](#) | [Reagents](#)