

Cleaved Caspase-6 p18 (Asp179) Rabbit pAb

CatalogNo: YC0008 **Orthogonal Validated** 

Key Features

Host Species

- Rabbit

Reactivity

- Human,Rat

Applications

- WB,IHC,IF,ELISA

MW

- 20kD,35kD (Observed)

Isotype

- IgG

Storage

Storage* -15°C to -25°C/1 year(Do not lower than -25°C)**Formulation** Liquid in PBS containing 50% glycerol, 0.5% BSA and 0.02% sodium azide.

Recommended Dilution Ratios

WB 1:500-1:2000**IHC 1:100-1:300****ELISA 1:40000****IF 1:50-200**

Basic Information

Clonality Polyclonal

Immunogen Information

Immunogen The antiserum was produced against synthesized peptide derived from human Caspase 6. AA range:130-179**Specificity** Cleaved-Caspase-6 p18 (D179) Polyclonal Antibody detects endogenous levels of fragment of activated Caspase-6 p18 protein resulting from cleavage adjacent to D179.

Target Information

Gene name CASP6

Protein Name Caspase6

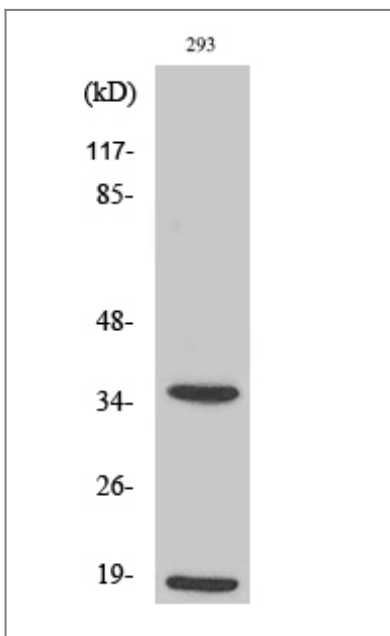
Organism	Gene ID	UniProt ID
Human	839;	P55212;
Mouse		O08738;
Rat		O35397;

Cellular Localization Cytoplasm . Nucleus .

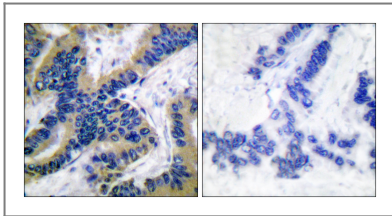
Tissue specificity Lung,Lymphocyte,T-cell,

Function Catalytic activity:Strict requirement for Asp at position P1 and has a preferred cleavage sequence of Val-Glu-His-Asp-|-.,enzyme regulation:Activation is suppressed by phosphorylation at Ser-257.,Function:Involved in the activation cascade of caspases responsible for apoptosis execution. Cleaves poly(ADP-ribose) polymerase in vitro, as well as lamins. Overexpression promotes programmed cell death.,PTM:Cleavages by caspase-3, caspase-8 or -10 generate the two active subunits.,similarity:Belongs to the peptidase C14A family.,subunit:Heterotetramer that consists of two anti-parallel arranged heterodimers, each one formed by a 18 kDa (p18) and a 11 kDa (p11) subunit.,

Validation Data



Western Blot analysis of 293 cells using Cleaved-Caspase-6 p18 (D179) Polyclonal Antibody diluted at 1:1000



Immunohistochemistry analysis of paraffin-embedded human lung carcinoma tissue, using Caspase 6 (Cleaved-Asp162) Antibody. The picture on the right is blocked with the synthesized peptide.

| Contact information

Orders: order@immunoway.com
Support: tech@immunoway.com
Telephone: 877-594-3616 (Toll Free), 408-747-0185
Website: <http://www.immunoway.com>
Address: 2200 Ringwood Ave San Jose, CA 95131 USA



Please scan the QR code to access additional product information:
Cleaved Caspase-6 p18 (Asp179) Rabbit pAb

For Research Use Only. Not for Use in Diagnostic Procedures.

[Antibody](#) | [ELISA Kits](#) | [Protein](#) | [Reagents](#)