

Cleaved Caspase-6 p18 (Asp162) Rabbit pAb

CatalogNo: YC0007

Orthogonal Validated 

Key Features

Host Species

- Rabbit

Reactivity

- Mouse,Rat

Applications

- WB,IHC,IF,ELISA

MW

- 28kD,35kD (Observed)

Isotype

- IgG

Recommended Dilution Ratios

WB 1:500-1:2000**IHC 1:100-1:300****ELISA 1:10000****IF 1:50-200**

Storage

Storage*

-15°C to -25°C/1 year(Do not lower than -25°C)

Formulation

Liquid in PBS containing 50% glycerol, 0.5% BSA and 0.02% sodium azide.

Basic Information

Clonality

Polyclonal

Immunogen Information

Immunogen

The antiserum was produced against synthesized peptide derived from mouse Caspase 6. AA range:144-193

Specificity

Cleaved-Caspase-6 p18 (D162) Polyclonal Antibody detects endogenous levels of fragment of activated Caspase-6 p18 protein resulting from cleavage adjacent to D162.

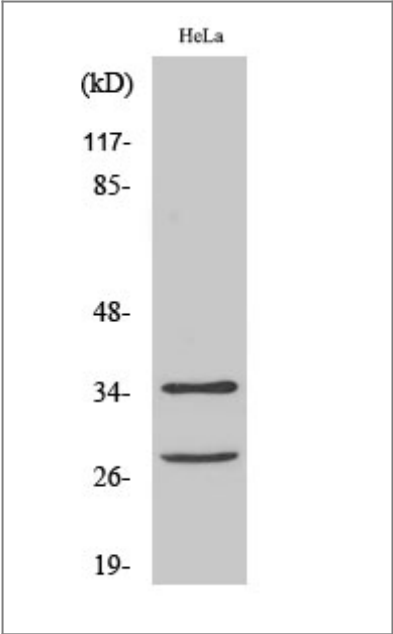
Target Information

Gene name CASP6

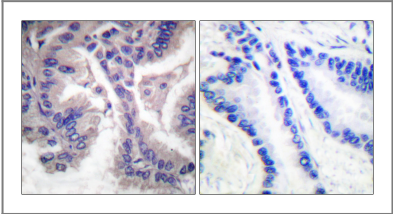
Protein Name Caspase6

Organism	Gene ID	UniProt ID
Human	839 ;	P55212 ;
Mouse	12368 ;	
Rat		O35397 ;

Validation Data



Western Blot analysis of HeLa cells using Cleaved-Caspase-6 p18 (D162) Polyclonal Antibody diluted at 1:1000



Immunohistochemistry analysis of paraffin-embedded human lung carcinoma tissue, using Caspase 6 (Cleaved-Asp162) Antibody. The picture on the right is blocked with the synthesized peptide.

Contact information

Orders: order@immunoway.com
Support: tech@immunoway.com
Telephone: 877-594-3616 (Toll Free), 408-747-0185
Website: <http://www.immunoway.com>
Address: 2200 Ringwood Ave San Jose, CA 95131 USA



Please scan the QR code
to access additional
product information:
**Cleaved Caspase-6
p18 (Asp162) Rabbit
pAb**

For Research Use Only. Not for Use in Diagnostic Procedures.

[Antibody](#) | [ELISA Kits](#) | [Protein](#) | [Reagents](#)