

Donkey Anti Rabbit IgG (AbFluor 647)

CatalogNo: RS4653

Key Features

Host Species

- Goat

Reactivity

- Rabbit

Applications

- IF,FC

Conjugate

- AbFluor 647

Storage

Storage*

Stable for one year at -15°C to -25°C from date of shipment. For maximum recovery of product, centrifuge the original vial after thawing and prior to removing the cap. Aliquot to avoid repeated freezing and thawing

Formulation

Liquid in PBS, pH 7.4, containing 0.02% Sodium Azide as preservative, 1% BSA as stabilizer and 50% Glycerol.

Recommended Dilution Ratios

Optimal working dilutions should be determined experimentally by the investigator
Suggested starting 1:50-1:300 dilutions for most fluorescent applications.

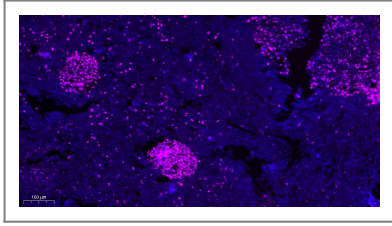
Basic Information

Immunogen Information

Target Information

Protein Name

| Validation Data



Immunofluorescence analysis of Human tonsils. 1,primary Antibody was diluted at 1:200(4~C overnight). 2, Secondary antibody was diluted at 1:200(room temperature, 50min).

| Contact information

Orders: order@immunoway.com
Support: tech@immunoway.com
Telephone: 877-594-3616 (Toll Free), 408-747-0185
Website: <http://www.immunoway.com>
Address: 2200 Ringwood Ave San Jose, CA 95131 USA



Please scan the QR code to access additional product information:

Donkey Anti Rabbit IgG (AbFluor 647)

For Research Use Only. Not for Use in Diagnostic Procedures.

[Antibody](#) | [ELISA Kits](#) | [Protein](#) | [Reagents](#)