

Goat anti Mouse IgG(H+L) (Cy3)

CatalogNo: RS4308

Key Features

Host Species

- Goat

Reactivity

- Mouse

Applications

- ELISA,IHC,IF,FC

Conjugate

- Cy3

Storage

Storage* -15°C to -25°C/1 year(Do not lower than -25°C)

Formulation Liquid in 0.01M Phosphate Buffered Saline, pH 7.2, containing 1% BSA, 50% glycerol, 0.02% Sodium Azide

Recommended Dilution Ratios

IHC (1:200-1:1000)

IF (1:200-1:1000)

Flow Cyt (1:2000-1:4000)

ELISA (Use at an assay dependent concentration)

Basic Information

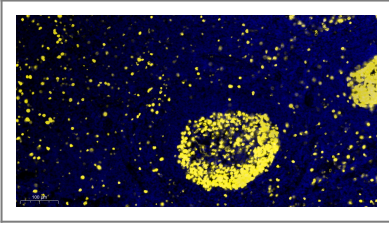
Immunogen Information

Immunogen Mouse IgG

Target Information

Protein Name

| Validation Data



Fluorescence immunohistochemical analysis of Human tonsil tissue (formalin-fixed paraffin-embedded section).

| Contact information

Orders: order@immunoway.com
Support: tech@immunoway.com
Telephone: 877-594-3616 (Toll Free), 408-747-0185
Website: <http://www.immunoway.com>
Address: 2200 Ringwood Ave San Jose, CA 95131 USA



Please scan the QR code to access additional product information:
Goat anti Mouse IgG(H+L) (Cy3)

For Research Use Only. Not for Use in Diagnostic Procedures.

[Antibody](#) | [ELISA Kits](#) | [Protein](#) | [Reagents](#)