

## Goat Anti Mouse IgG(H+L) (AbFluor 647)

CatalogNo: RS3808

### Key Features

#### Host Species

- Goat

#### Reactivity

- Mouse

#### Applications

- ELISA,IF,FC

#### Conjugate

- AbFluor 647

### Storage

#### Storage\*

Stable for one year at -15°C to -25°C from date of shipment. For maximum recovery of product, centrifuge the original vial after thawing and prior to removing the cap. Aliquot to avoid repeated freezing and thawing

#### Formulation

1 mg/ml, liquid in 0.01M Phosphate Buffered Saline, pH 7.2, containing 1% BSA, 50% glycerol, 0.02% Sodium Azide

### Recommended Dilution Ratios

IF 1:200-1:1000

Flow Cyt 1:100-1:1000

ELISA (Use at an assay dependent concentration)

### Basic Information

### Immunogen Information

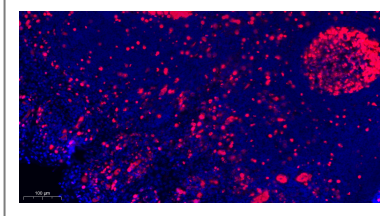
### Target Information

Protein Name

## Validation Data

Alexa Fluor 350	346/442	Blue
Alexa Fluor 405	401/421	Blue
Alexa Fluor 488	496/519	Green
Alexa Fluor 532	532/553	Yellow
Alexa Fluor 555	555/565	Yellow
Alexa Fluor 568	578/603	Red/Orange
Alexa Fluor 594	590/617	Red/Orange
Alexa Fluor 633	632/647	Red
Alexa Fluor 647	650/665	Red
Alexa Fluor 660	663/690	Near IR
Alexa Fluor 680	679/702	Near IR
Alexa Fluor 750	749/775	Near IR
Alexa Fluor 790	784/814	Near IR

To use the Alexa Fluors with fluorescent imagers, use a spectral line of the blue laser diode for Alexa Fluors 405, a cyan (488 nm) laser for Alexa Fluors 488, a yellow (526 nm) laser for Alexa Fluor 550 or 594, and a red (633 nm) laser for Alexa Fluor 649. The Alexa Fluor 680 and 790 fluors are compatible with laser- and filter-based infrared imaging instruments that emit in the 700 nm, and 800 nm



Fluorescence immunohistochemical analysis of Human tonsil tissue (formalin-fixed paraffin-embedded section).

## Contact information

Orders: [order@immunoway.com](mailto:order@immunoway.com)  
Support: [tech@immunoway.com](mailto:tech@immunoway.com)  
Telephone: 877-594-3616 (Toll Free), 408-747-0185  
Website: <http://www.immunoway.com>  
Address: 2200 Ringwood Ave San Jose, CA 95131 USA



Please scan the QR code to access additional product information:  
**Goat Anti Mouse IgG(H+L) (AbFluor 647)**

For Research Use Only. Not for Use in Diagnostic Procedures.

[Antibody](#) | [ELISA Kits](#) | [Protein](#) | [Reagents](#)