

Goat Anti Mouse IgG(H+L) (AbFluor 555)

CatalogNo: RS3408

Key Features

Host Species

- Goat

Reactivity

- Mouse

Applications

- ELISA,IF,FC

Conjugate

- AbFluor 555

Storage

Storage*

Stable for one year at -15°C to -25°C from date of shipment. For maximum recovery of product, centrifuge the original vial after thawing and prior to removing the cap. Aliquot to avoid repeated freezing and thawing

Formulation

1 mg/ml, liquid in 0.01M Phosphate Buffered Saline, pH 7.2, containing 1% BSA, 50% glycerol, 0.02% Sodium Azide

Recommended Dilution Ratios

IF 1:200-1:1000

Flow Cyt 1:100-1:1000

ELISA (Use at an assay dependent concentration)

Basic Information

Immunogen Information

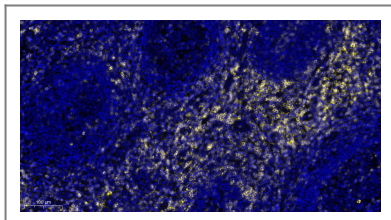
Target Information

Protein Name

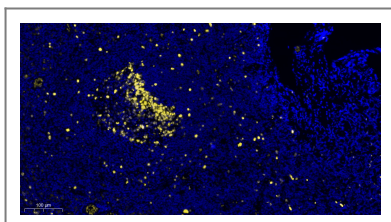
Validation Data

Alexa Fluor 350	346/442	Blue
Alexa Fluor 405	401/421	Blue
Alexa Fluor 488	496/519	Green
Alexa Fluor 532	532/553	Yellow
Alexa Fluor 555	555/565	Yellow
Alexa Fluor 568	578/603	Red/Orange
Alexa Fluor 594	590/617	Red/Orange
Alexa Fluor 633	632/647	Red
Alexa Fluor 647	650/665	Red
Alexa Fluor 660	663/690	Near IR
Alexa Fluor 680	679/702	Near IR
Alexa Fluor 750	749/775	Near IR
Alexa Fluor 790	784/814	Near IR

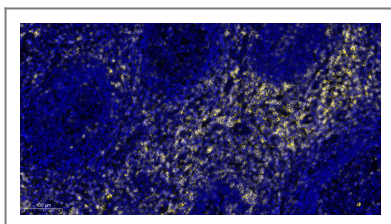
To use the Alexa Fluors with fluorescent imagers, use a spectral line of the blue laser diode for Alexa Fluors 405, a cyan (488 nm) laser for Alexa Fluors 488, a yellow (526 nm) laser for Alexa Fluor 550 or 594, and a red (633 nm) laser for Alexa Fluor 649. The Alexa Fluor 680 and 790 fluors are compatible with laser- and filter-based infrared imaging instruments that emit in the 700 nm, and 800 nm



Immunofluorescence analysis of paraffin-embedded Human Immunohistochemical analysis of paraffin-embedded Human Thyroid tissue. 1, primary Antibody was diluted at 1:200(4°C,overnight). 2, EDTA pH 9.0 was used for antibody retrieval(>98°C,20min). 3,Secondary antibody was diluted at 1:200(room temperature, 30min). tissue. 1, primary Antibody was diluted at 1:200(4°C,overnight). 2, EDTA pH 9.0 was used for antibody retrieval(>98°C,20min). 3,Secondary antibody was diluted at 1:200(room temperature, 30min).



Fluorescence immunohistochemical analysis of Human tonsil tissue (formalin-fixed paraffin-embedded section).



Fluorescence immunohistochemical analysis of Human tonsil tissue (formalin-fixed paraffin-embedded section).

Contact information

Orders: order@immunoway.com
Support: tech@immunoway.com
Telephone: 877-594-3616 (Toll Free), 408-747-0185
Website: <http://www.immunoway.com>
Address: 2200 Ringwood Ave San Jose, CA 95131 USA



Please scan the QR code to access additional product information:
Goat Anti Mouse IgG(H+L) (AbFluor 555)