

Goat Anti Rabbit IgG(H+L) (AbFluor 488)

CatalogNo: RS3211

| Key Features

Host Species

- Goat

Reactivity

- Rabbit

Applications

- ELISA,IF,FC

Conjugate

- AbFluor 488

| Recommended Dilution Ratios

IF 1:200-1:1000

Flow Cyt 1:100-1:1000

ELISA (Use at an assay dependent concentration)

| Storage

Storage*

Stable for one year at -15°C to -25°C from date of shipment. For maximum recovery of product, centrifuge the original vial after thawing and prior to removing the cap. Aliquot to avoid repeated freezing and thawing

Formulation

1 mg/ml, liquid in 0.01M Phosphate Buffered Saline, pH 7.2, containing 1% BSA, 50% glycerol, 0.02% Sodium Azide

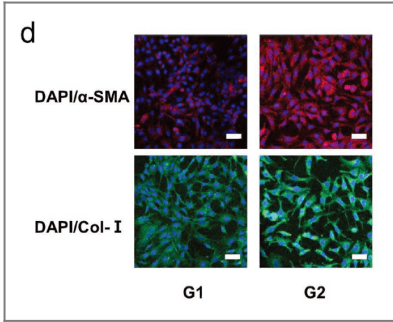
| Basic Information

| Immunogen Information

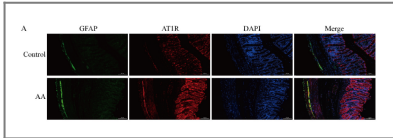
| Target Information

Protein Name

Validation Data



Inhaled Lipid Nanoparticles Alleviate Established Pulmonary Fibrosis Small Yang Yang IF Mouse murine lung epithelial-12 (MLE-12) cell



Losartan attenuates acetic acid enema-induced visceral hypersensitivity by inhibiting the ACE1/Ang II/AT1 receptor axis in enteric glial cells EUROPEAN JOURNAL OF PHARMACOLOGY Fei Dai IF Rat colon tissue enteric glial cells (EGCs)

| | | |
|-----------------|---------|------------|
| Alexa Fluor 350 | 346/442 | Blue |
| Alexa Fluor 405 | 401/421 | Blue |
| Alexa Fluor 488 | 496/519 | Green |
| Alexa Fluor 532 | 532/553 | Yellow |
| Alexa Fluor 555 | 555/565 | Yellow |
| Alexa Fluor 568 | 578/603 | Red/Orange |
| Alexa Fluor 594 | 590/617 | Red/Orange |
| Alexa Fluor 633 | 632/647 | Red |
| Alexa Fluor 647 | 650/665 | Red |
| Alexa Fluor 660 | 663/690 | Near IR |
| Alexa Fluor 680 | 679/702 | Near IR |
| Alexa Fluor 750 | 749/775 | Near IR |
| Alexa Fluor 790 | 784/814 | Near IR |

To use the Alexa Fluors with fluorescent imagers, use a spectral line of the blue laser diode for Alexa Fluors 405, a cyan (488 nm) laser for Alexa Fluors 488, a yellow (526 nm) laser for Alexa Fluor 550 or 594, and a red (633 nm) laser for Alexa Fluor 649. The Alexa Fluor 680 and 790 fluors are compatible with laser- and filter-based infrared imaging instruments that emit in the 700 nm, and 800 nm

Contact information

Orders: order@immunoway.com
 Support: tech@immunoway.com
 Telephone: 877-594-3616 (Toll Free), 408-747-0185
 Website: http://www.immunoway.com
 Address: 2200 Ringwood Ave San Jose, CA 95131 USA



Please scan the QR code to access additional product information:
Goat Anti Rabbit IgG(H+L) (AbFluor 488)

For Research Use Only. Not for Use in Diagnostic Procedures.

Antibody | ELISA Kits | Protein | Reagents