

Nanoantibody anti Rabbit for IP (HRP)

CatalogNo: RS0121

Key Features

Reactivity

- Rabbit

Conjugate

- HRP

Applications

- WB,mIHC,IP,ELISA

Storage

Storage* 2-8°C, Ship by ice bag

Recommended Dilution Ratios

WB 1:2000-10000

IP 1:5000-20000

mIHC/IF 200-500

ELISA 5000-50000

Basic Information

Source Camel, VHH his-tag

Purification Camel, VHH his-tag

Immunogen Information

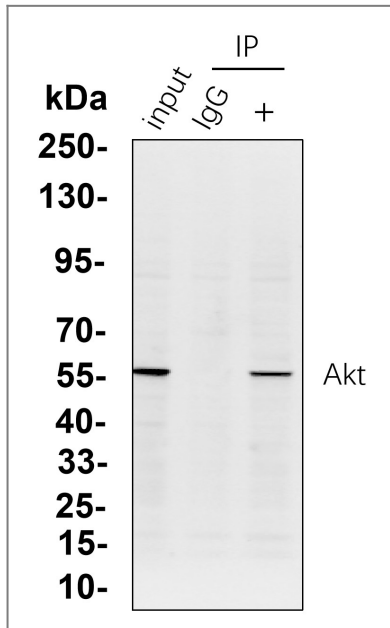
Specificity

This antibody is immunoblotting reagents that enable the trouble-free detection of immunoblotted target protein bands, without interference from denatured IgG. This allows to detect the (co-)immunoprecipitated protein without masking by the IgG heavy (50 kDa) and light chains (25 kDa). In general, this interference tends to originate from secondary antibodies which recognize primary antibodies released with the antigen during the immunoprecipitation procedure or endogenous IgGs from the lysate itself. This antibody only recognize native (non-reduced) antibodies and therefore the detection of heavy and light chains is highly minimized. This antibody has no reaction with Mouse/Human IgGs.

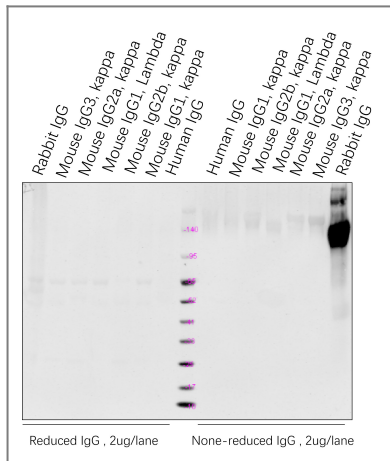
Target Information

Protein Name

Validation Data



Immunoprecipitating Akt in HeLa whole cell lysate with rabbit anti Akt (Catalog YM8463). Western blot was performed on the immunoprecipitate using anti Akt (Catalog YM8463) at 1:200 dilution, and followed by the HRP labeled anti Rabbit IgG for IP antibody at 1:5000 dilution. Lane 1 (Input): 20ug HeLa whole cell lysate. Lane 2 (-): Rabbit IgG, Isotype Control (Catalog VN0014) instead of Akt antibody in HeLa whole cell lysate. Lane 3 (+): 6ug Akt antibody IP in 1000ug HeLa whole cell lysate.



anti Rabbit IgG for IP (HRP) was diluted at 1:5000 to detect non-reduced or reduced different forms of IgG, 2ug/lane.

Contact information

Orders: order@immunoway.com
Support: tech@immunoway.com
Telephone: 877-594-3616 (Toll Free), 408-747-0185
Website: <http://www.immunoway.com>
Address: 2200 Ringwood Ave San Jose, CA 95131 USA



Please scan the QR code to access additional product information:
Nanoantibody anti Rabbit for IP (HRP)

