

Goat Anti Rabbit IgG(H+L) (FITC)

CatalogNo: RS0004

Key Features

Host Species

- Goat

Reactivity

- Rabbit

Applications

- IF,ELISA

Conjugate

- FITC

Storage

Storage* -15°C to -25°C/1 year(Do not lower than -25°C)

Formulation Liquid in PBS containing 50% glycerol, 0.5% BSA and 0.02% sodium azide.

Recommended Dilution Ratios

Optimal working dilutions should be determined experimentally by the investigator

Suggested starting dilutions are:IF (1:250-1:2000)

ELISA 1:5000-20000

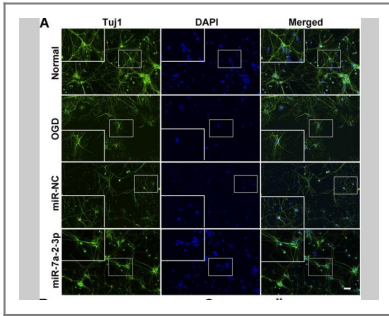
Basic Information

Immunogen Information

Target Information

Protein Name

Validation Data



Zhang, Zi-Bin, et al. "miRNA-7a-2-3p Inhibits Neuronal Apoptosis in Oxygen-Glucose Deprivation (OGD) Model." *Frontiers in neuroscience* 13 (2019).

Contact information

Orders: order@immunoway.com
 Support: tech@immunoway.com
 Telephone: 877-594-3616 (Toll Free), 408-747-0185
 Website: <http://www.immunoway.com>
 Address: 2200 Ringwood Ave San Jose, CA 95131 USA



Please scan the QR code to access additional product information:
Goat Anti Rabbit IgG(H+L) (FITC)

For Research Use Only. Not for Use in Diagnostic Procedures.

[Antibody](#) | [ELISA Kits](#) | [Protein](#) | [Reagents](#)