

Goat Anti Mouse IgG(H+L) (HRP)

CatalogNo: RS0001

Key Features

Host Species

- Goat

Reactivity

- Mouse

Applications

- WB,IHC,ELISA

Conjugate

- HRP

Storage

Storage* -15°C to -25°C/1 year(Do not lower than -25°C)

Formulation Liquid in PBS containing 50% glycerol, 0.5% BSA and 0.02% sodium azide.

Recommended Dilution Ratios

WB 1:5000-20000

IHC 1:20-100

ELISA 1:5000-20000

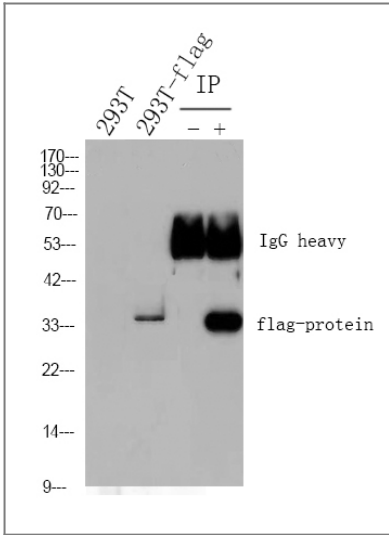
Basic Information

Immunogen Information

Target Information

Protein Name

Validation Data



1) Input: 293T transfected N-flag protein Lysate 2) IP product: IP dilute 1: 200, 293T transfected N-flag protein Lysate Western blot analysis: primary antibody : 1:10000 Secondary antibody: Goat anti-Mouse IgG (RS0001), 1: 5000

Contact information

Orders: order@immunoway.com
 Support: tech@immunoway.com
 Telephone: 877-594-3616 (Toll Free), 408-747-0185
 Website: <http://www.immunoway.com>
 Address: 2200 Ringwood Ave San Jose, CA 95131 USA



Please scan the QR code to access additional product information:
Goat Anti Mouse IgG(H+L) (HRP)

For Research Use Only. Not for Use in Diagnostic Procedures.

[Antibody](#) | [ELISA Kits](#) | [Protein](#) | [Reagents](#)