

## MRC-5 cell lysate blotted NC membrane

CatalogNo: M10036

### | Key Features

---

#### Applications

- WB
- 

### | Storage

**Storage\*** -20°C

**Formulation** Human embryonal lung cell, 30ug total sample lysate per lane, 0.22um NC membrane

### | Recommended Dilution Ratios

### | Basic Information

### | Immunogen Information

---

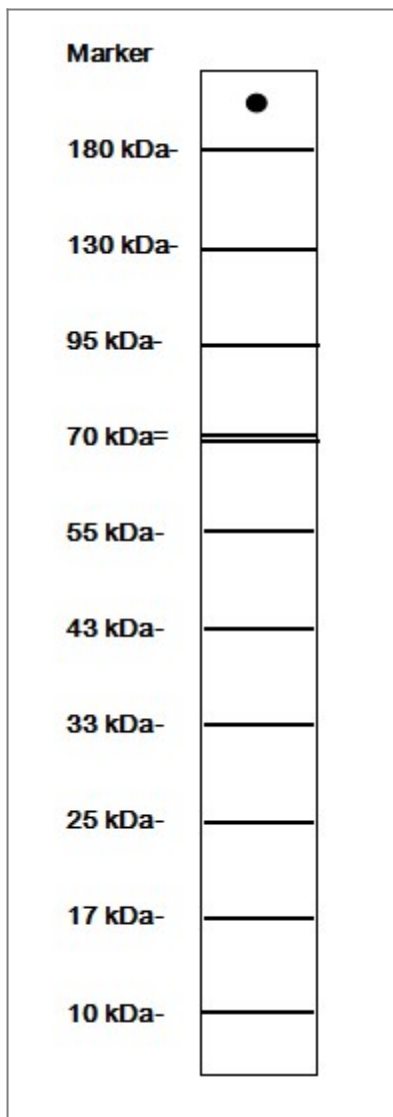
### | Target Information

#### Protein Name

**Function** The NC membrane was blotted the protein, then block with 5% non-fat milk. Incubate the NC membrane directly with the primary antibody.

---

### | Validation Data



## Contact information

Orders: [order@immunoway.com](mailto:order@immunoway.com)  
Support: [tech@immunoway.com](mailto:tech@immunoway.com)  
Telephone: 877-594-3616 (Toll Free), 408-747-0185  
Website: <http://www.immunoway.com>  
Address: 2200 Ringwood Ave San Jose, CA 95131 USA



Please scan the QR code to access additional product information:  
**MRC-5 cell lysate blotted NC membrane**

For Research Use Only. Not for Use in Diagnostic Procedures.

[Antibody](#) | [ELISA Kits](#) | [Protein](#) | [Reagents](#)