

## p57kip2 (ABT214) IHC kit

CatalogNo: IHCM6996

### | Key Features

#### Host Species

- Mouse

#### Reactivity

- Human, Mouse, Rat,

#### Applications

- IHC

#### Isotype

- IgG2b, Kappa

### | Recommended Dilution Ratios

### | Storage

**Storage\*** 2°C to 8°C/1 year

### | Basic Information

**Clonality** Monoclonal

**Clone Number** ABT214

### | Immunogen Information

**Immunogen** Synthesized peptide derived from human p57kip2 AA range: 200-316

**Specificity** The antibody can specifically recognize human p57kip2 protein.

### | Target Information

**Gene name** CDKN1C KIP2

**Protein Name** Beckwith Wiedemann syndrome;BWCR;BWS;CDKI;CDKN 1C;CDKN1C;CDN1C\_HUMAN;Cyclin dependent kinase inhibitor 1C;Cyclin dependent kinase inhibitor p57;Cyclin-dependent kinase inhibitor 1C;Cyclin-dependent kinase inhibitor p57;KIP 2;KIP2;p57;p57 Kip 2;p57KIP2;WBS

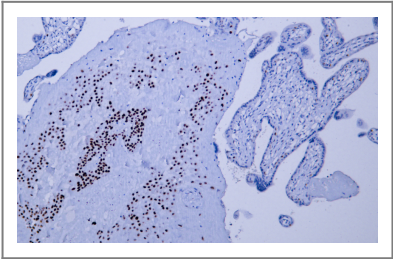
Organism	Gene ID	UniProt ID
Human	<a href="#">1028;</a>	<a href="#">P49918;</a>
Mouse		<a href="#">P49919;</a>

**Cellular Localization** Nuclear

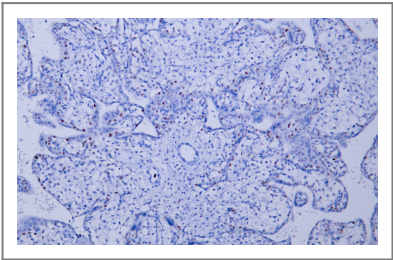
**Tissue specificity** Placenta/ Kindey

**Function** Disease:Defects in CDKN1C are a cause of Beckwith-Wiedemann syndrome (BWS) [MIM:130650]. BWS is a genetically heterogeneous disorder characterized by anterior abdominal wall defects including exomphalos (omphalocele), pre- and postnatal overgrowth, and macroglossia. Additional less frequent complications include specific developmental defects and a predisposition to embryonal tumors.,Disease:Defects in CDKN1C are involved in tumor formation.,Function:Potent tight-binding inhibitor of several G1 cyclin/CDK complexes (cyclin E-CDK2, cyclin D2-CDK4, and cyclin A-CDK2) and, to lesser extent, of the mitotic cyclin B-CDC2. Negative regulator of cell proliferation. May play a role in maintenance of the non-proliferative state throughout life.,similarity:Belongs to the CDI family.,tissue specificity:Expressed in the heart, brain, lung, skeletal muscle, kidney, pancreas and testis. High levels are seen in the placenta while low levels are seen in the liver.,

## Validation Data



Human placenta tissue was stained with Anti-p57kip2 (ABT214) Antibody



Human placenta tissue was stained with Anti-p57kip2 (ABT214) Antibody

## Contact information

Orders: [order@immunoway.com](mailto:order@immunoway.com)  
Support: [tech@immunoway.com](mailto:tech@immunoway.com)  
Telephone: 877-594-3616 (Toll Free), 408-747-0185  
Website: <http://www.immunoway.com>  
Address: 2200 Ringwood Ave San Jose, CA 95131 USA



Please scan the QR code  
to access additional  
product information:  
**p57kip2 (ABT214)**  
**IHC kit**

---

For Research Use Only. Not for Use in Diagnostic Procedures.

[Antibody](#) | [ELISA Kits](#) | [Protein](#) | [Reagents](#)