

CD105 (ABT-CD105) IHC kit

CatalogNo: IHCM6570

Key Features

Host Species

- Mouse

Reactivity

- Human

Applications

- IHC

Isotype

- IgG2a,Kappa

Storage

Storage* 2°C to 8°C/1 year,Ship by ice bag

Recommended Dilution Ratios

Basic Information

Clonality Monoclonal

Clone Number ABT-CD105

Immunogen Information

Immunogen Synthesized peptide derived from human CD105(Endoglin) AA range: 400-500

Specificity The antibody can specifically recognize human CD105 protein.

Target Information

Gene name ENG END

Protein Name Endoglin (CD antigen CD105)

Organism

Gene ID

UniProt ID

Human

[2022](#);

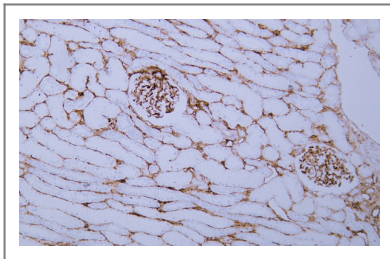
[P17813](#);

Cellular Localization Cytoplasmic

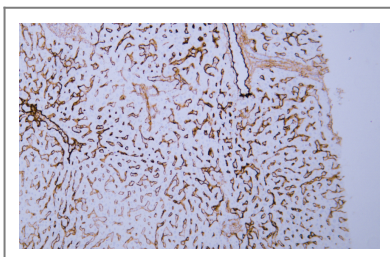
Tissue specificity Detected on umbilical vein endothelial cells (PubMed:10625079). Detected in placenta (at protein level) (PubMed:1692830). Detected on endothelial cells (PubMed:1692830).

Function Disease:Defects in ENG are the cause of hereditary hemorrhagic telangiectasia type 1 (HHT1) [MIM:187300, 108010]; also known as Osler-Rendu-Weber syndrome 1 (ORW1). HHT1 is an autosomal dominant multisystemic vascular dysplasia, characterized by recurrent epistaxis, muco-cutaneous telangiectases, gastro-intestinal hemorrhage, and pulmonary (PAVM), cerebral (CAVM) and hepatic arteriovenous malformations; all secondary manifestations of the underlying vascular dysplasia. Although the first symptom of HHT1 in children is generally nose bleed, there is an important clinical heterogeneity. Function:Major glycoprotein of vascular endothelium. May play a critical role in the binding of endothelial cells to integrins and/or other RGD receptors. subunit:Homodimer that forms a heteromeric complex with the signaling receptors for transforming growth factor-beta: TGF-beta receptors I and/or II. It is able to bind TGF-beta 1, and 3 efficiently and TGF-beta 2 less efficiently. Interacts with TCTEX1D4. tissue specificity:Endoglin is restricted to endothelial cells in all tissues except bone marrow.

Validation Data



Human kidney tissue was stained with anti-CD105(ABT-CD105) antibody.



Human liver tissue was stained with anti-CD105(ABT-CD105) antibody.

Contact information

Orders: order@immunoway.com
Support: tech@immunoway.com
Telephone: 877-594-3616 (Toll Free), 408-747-0185
Website: http://www.immunoway.com
Address: 2200 Ringwood Ave San Jose, CA 95131 USA



Please scan the QR code
to access additional
product information:
**CD105 (ABT-CD105)
IHC kit**

For Research Use Only. Not for Use in Diagnostic Procedures.

[Antibody](#) | [ELISA Kits](#) | [Protein](#) | [Reagents](#)